

POWERHOUSE

C H E L S E A W A T E R F R O N T



F L O O R P L A N S

POWERHOUSE

C H E L S E A W A T E R F R O N T





Computer generated image is indicative only

A new living experience, created within the historic walls of one of the capital's last great industrial icons, tells a story 100 years in the making.

On the riverfront, in one of the most refined corners of London, a twin-turreted power station that once powered the Underground is re-energised and reimaged to offer a 21st century living experience like no other.

A Chelsea original, located in an intimate enclave at the heart of London's most distinguished and elegant Royal Borough, takes on a revolutionary new form, marking the biggest change for the borough in living memory. A story that began more than 100 years ago reaches its natural conclusion.

Welcome to the Powerhouse, an exceptionally rare and special collection of 260 luxury apartments embraced by history and glittering with future potential.

THE ART OF MAKING AN ENTRANCE

POWERHOUSE

POWERHOUSE

2 — 3

WELCOME HOME



Powerhouse offers a range of amenities to complement the lifestyle of its residents.

The 24-hour concierge ensures a lifestyle of ease from the moment you arrive, delivered with the utmost care and attention to detail.

The solid granite desk is inspired by the coal that was once the building's primary power-generating source.



POWERHOUSE

Computer generated image is indicative only

STEP INTO THE LIGHT

6 — 7

“I was honoured to have been involved with the design of such an iconic building. Having lived and worked nearby for so many years it is such a pleasure to watch it come back to life! We were very conscious of incorporating into the design existing architectural and historical features and references, and combining these to give a feel of luxury through materiality and integrity of design.”

Fiona Barratt-Campbell, interior architect.



Designed by world-renowned landscape architects Randle Siddeley, the landscaped gardens match the horticultural prestige of the Chelsea Flower Show.

Sheltered by beautiful trees and flowers, the gardens provide a perfect escape from city life. Secluded seating areas, overlooking soothing water features and vibrant blooms, make for an informal, relaxed setting and the paths that gently curve around the river are ideal for taking in the views.

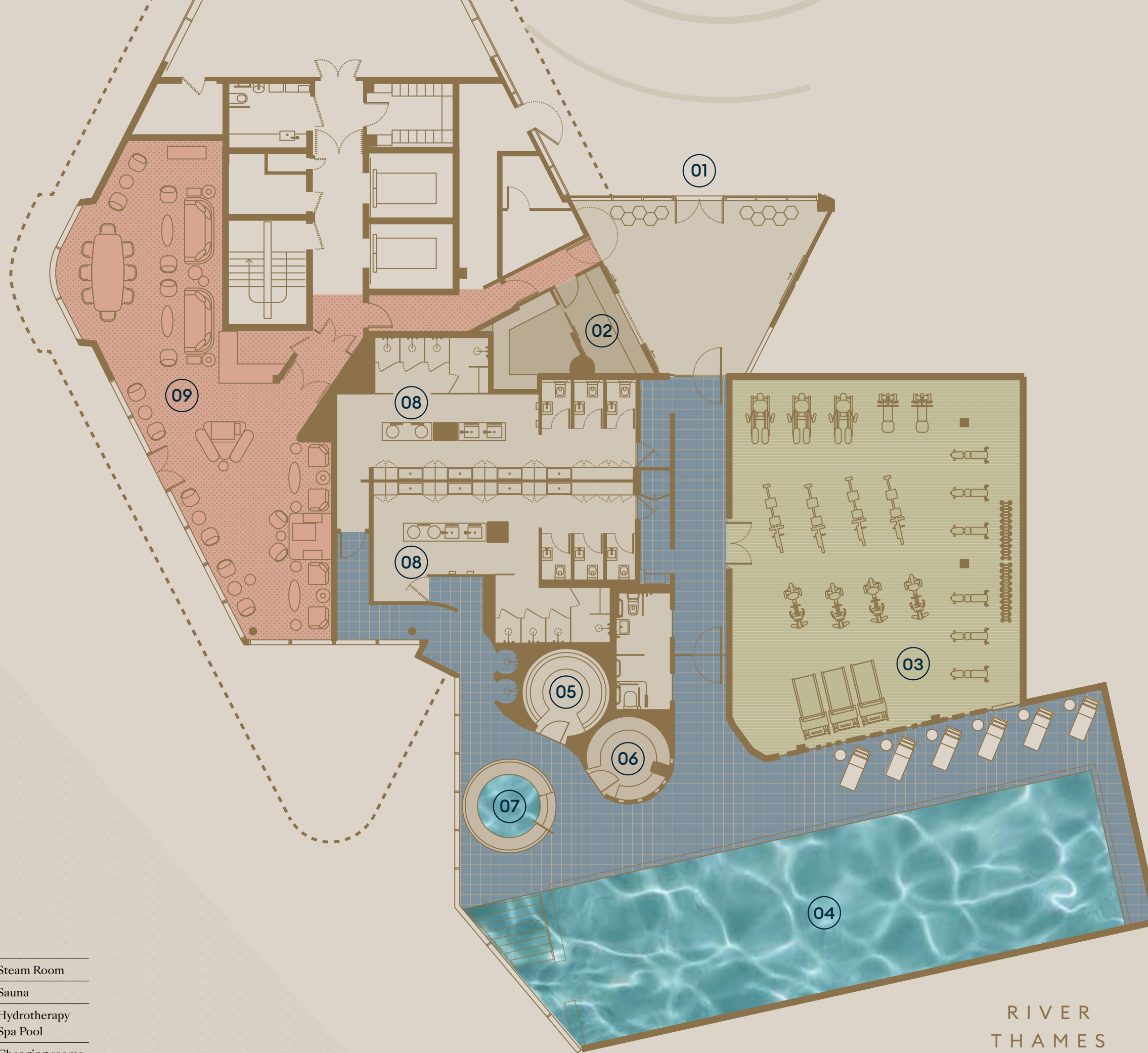
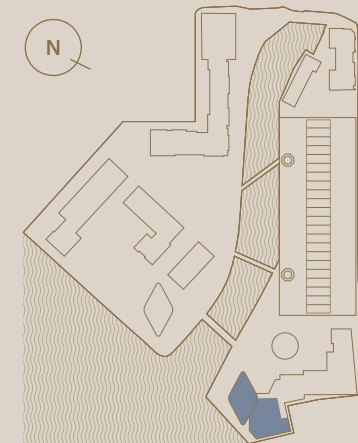


- 01 Car park entrances
 - 02 Restaurant*
 - 03 Café*
 - 04 Concierge
 - 05 Residents' fitness club
 - 06 Play area
 - 07 Water Gardens
 - 08 Thames path
- *subject to letting

CHELSEA WATERFRONT

RIVER THAMES





Facilities

- | | |
|-----------------------------------|--------------------------|
| 01 Spa and fitness suite entrance | 05 Steam Room |
| 02 Reception and juice bar | 06 Sauna |
| 03 Gym | 07 Hydrotherapy Spa Pool |
| 04 Pool | 08 Changing rooms |
| | 09 Residents Club Lounge |

Relax and unwind in an *oasis of urban calm*, designed to reinvigorate the body and mind.

The luxuriously appointed wellness facilities at Chelsea Waterfront will set a new benchmark in relaxation and tranquillity.

The 20-metre swimming pool is as peaceful and serene a destination as you can find. Columns of light reflect in the water, casting an ethereal glow around the monochrome loungers, jacuzzi and shimmering, geometric tiling. Floor-to-ceiling windows reveal a panorama of nearby Battersea and St Mary's Church, where the poet William Blake was married. The sauna and steam room provide a sanctuary for relaxation and total escapism.

RIVER
THAMES

POWER UP+WIND DOWN



POWERHOUSE

12 — 13

A state-of-the-art health and fitness centre delivers the most sought-after asset to modern living: holistic wellbeing.

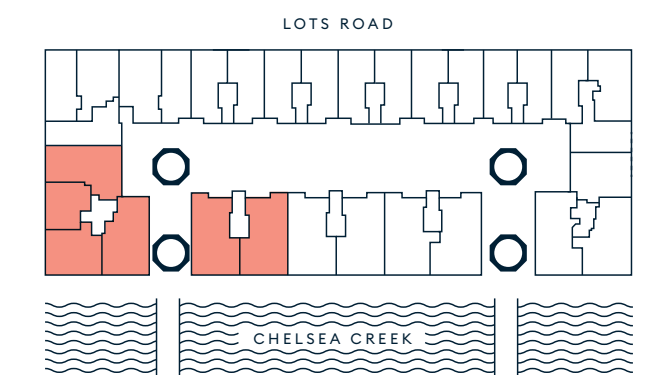
Computer generated image is indicative only



Computer generated image is indicative only

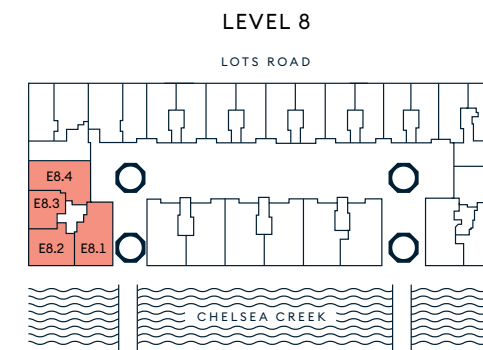
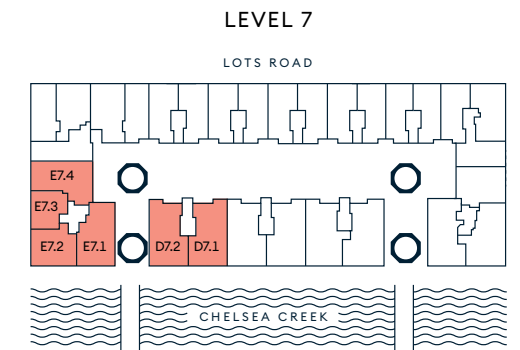
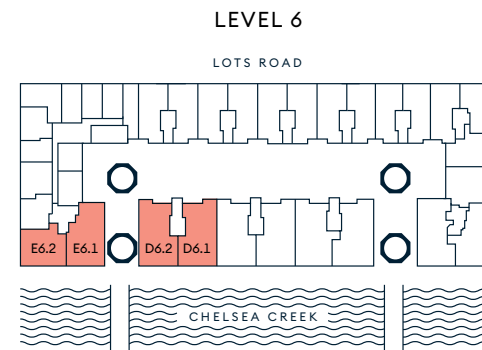
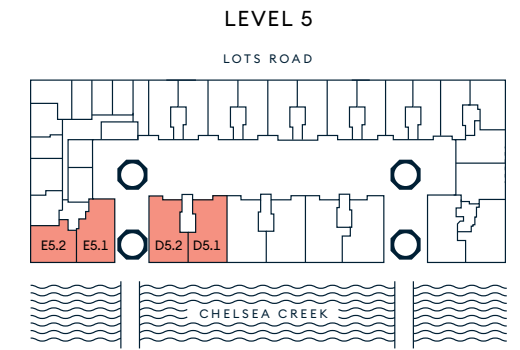
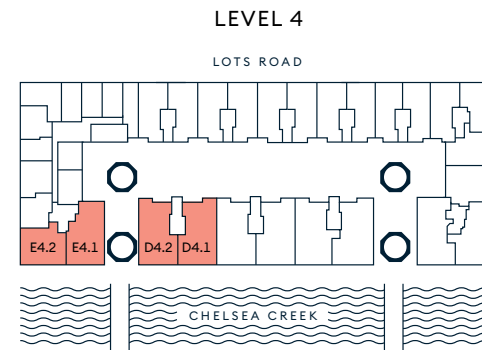
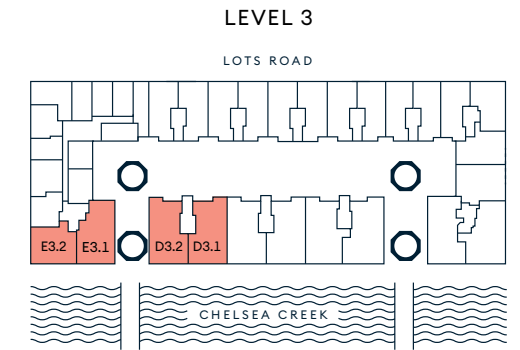
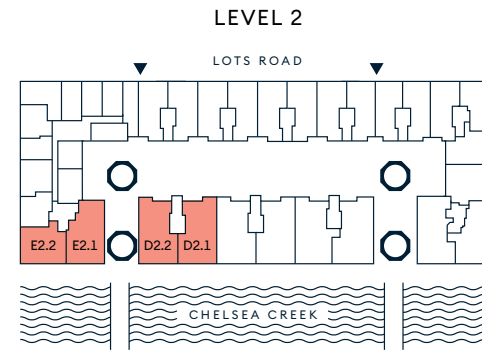
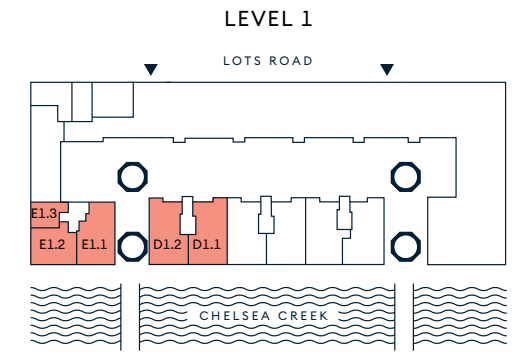
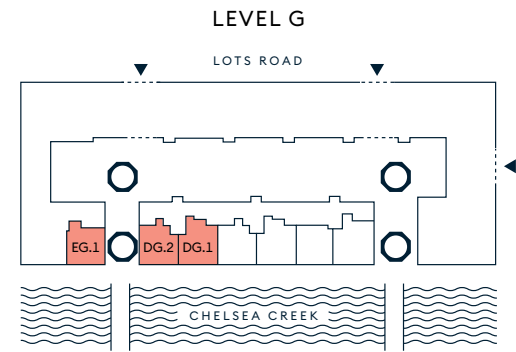
RIVER VIEW.

Expansive, beautifully designed living spaces with views across the River Thames.



RIVER VIEW APARTMENT LOCATOR.

Apartment	Level	Bedrooms	Balcony (sq m)	Balcony (sq ft)	Apartment area (sq m)	Apartment area (sq ft)	Page
DG.1	G	Two	15.3	165	99.7	1,074	33
DG.2	G	Two	15.4	166	93.6	1,008	32
EG.1	G	Two	15.2	164	94.3	1,015	18
D1.1	1	Four	16.0	172	163.8	1,763	35
D1.2	1	Four	15.0	161	161.0	1,733	34
E1.1	1	Three + Study	14.8	159	153.1	1,648	24
E1.2	1	Three	17.1	185	104.1	1,121	20
E1.3	1	One	—	—	59.2	637	19
D2.1	2	Four	16.0	172	163.8	1,764	37
D2.2	2	Four	15.0	161	161.0	1,734	36
E2.1	2	Three + Study	14.7	159	153.6	1,654	25
E2.2	2	Three	17.2	186	103.7	1,117	21
D3.1	3	Four	16.0	172	163.9	1,764	37
D3.2	3	Four	15.0	162	161.0	1,734	36
E3.1	3	Three + Study	14.8	160	153.6	1,653	25
E3.2	3	Three	17.3	187	103.8	1,118	22
D4.1	4	Four	16.0	172	163.8	1,763	37
D4.2	4	Four	15.0	162	161.0	1,733	36
E4.1	4	Three + Study	14.8	160	153.6	1,654	25
E4.2	4	Three	17.3	187	103.8	1,118	21
D5.1	5	Four	16.0	172	163.8	1,764	37
D5.2	5	Four	15.0	162	161.0	1,734	36
E5.1	5	Three + Study	14.8	160	153.6	1,654	25
E5.2	5	Three	17.5	188	104.9	1,129	22
D6.1	6	Four	16.0	172	163.8	1,764	37
D6.2	6	Four	15.0	162	161.1	1,734	36
E6.1	6	Three + Study	14.8	160	153.6	1,654	25
E6.2	6	Three	17.5	188	104.5	1,125	22
D7.1	7	Four	15.0	162	161.1	1,734	37
D7.2	7	Four	16.0	172	163.8	1,764	36
E7.1	7	Three + Study	14.7	159	153.7	1,655	25
E7.2	7	Three	17.4	188	105.5	1,137	21
E7.3	7	Two	—	—	97.3	1,047	28
E7.4	7	Four	—	—	173.6	1,869	30
E8.1	8	Three + Study	14.7	159	150.6	1,621	26
E8.2	8	Three	17.7	191	105.2	1,133	23
E8.3	8	Two	—	—	97.3	1,048	29
E8.4	8	Four	—	—	173.0	1,863	31



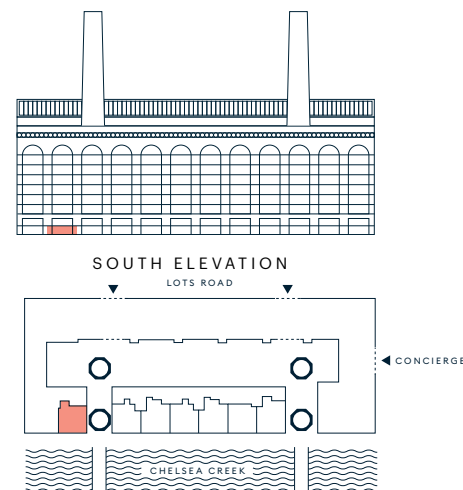
Two Bedroom



LEVEL G APT EG.1



Living / Dining / Kitchen	
4.2m x 8.3m	13'8" x 27'2"
Principal bedroom	
3.6m x 3.6m	11'8" x 11'8"
Bedroom 2	
2.9m x 3.9m	9'5" x 12'8"
Apartment area	
94.3 sq m	1,015 sq ft
Balcony	
15.2 sq m	164 sq ft
Total area	
109.5 sq m	1,179 sq ft

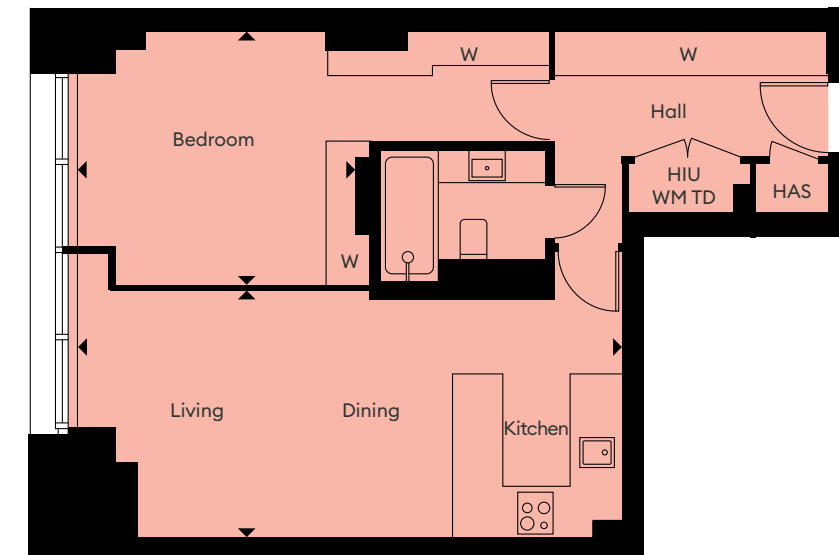


W Wardrobe, WM Washing machine, TD Tumble dryer, HIU Heat interface unit, HAS Home Automation System.
Floor plans shown are for approximate measurements only. Exact layouts and sizes may vary. Please refer to the area schedule at the front of the brochure for exact area figures.

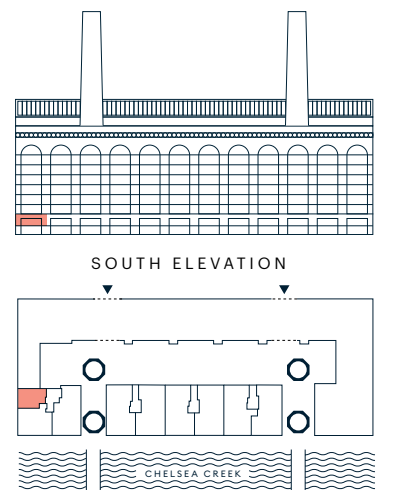
One bedroom



LEVEL 1 APT E1.3



Living / Dining / Kitchen	
7.6m x 3.4m	24'9" x 11'2"
Bedroom	
3.9m x 3.5m	12'8" x 11'5"
Total Area	
59.2 sq m	637 sq ft



W Wardrobe, WM Washing machine, TD Tumble dryer, HIU Heat interface unit, HAS Home Automation System.
Floor plans shown are for approximate measurements only. Exact layouts and sizes may vary. Please refer to the area schedule at the front of the brochure for exact area figures.

Three Bedroom

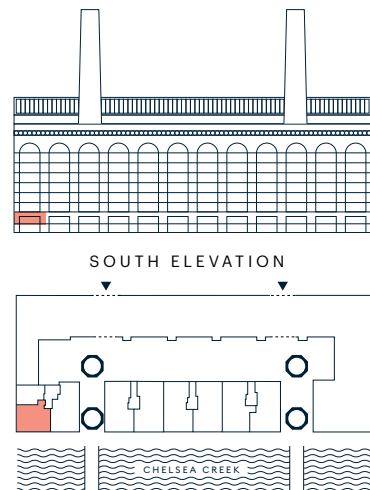


LEVEL 1 APT E1.2

Windows denoted with ** do not open in this apartment



Living / Dining	6.1m x 4.6m	20'0" x 15'1"
Kitchen	2.3m x 3.5m	7'5" x 11'5"
Principal bedroom	3.9m x 3.7m	12'8" x 12'1"
Bedroom 2	3.1m x 2.8m	10'2" x 9'2"
Study / Bedroom	3.4m x 2.8m	11'2" x 9'2"
Apartment area	104.1 sq m	1,121 sq ft
Balcony	17.1 sq m	185 sq ft
Total area	121 sq m	1,306 sq ft



W Wardrobe, WM Washing machine, TD Tumble dryer, HIU Heat interface unit, HAS Home Automation System, AW Arched window. Floor plans shown are for approximate measurements only. Exact layouts and sizes may vary. Please refer to the area schedule at the front of the brochure for exact area figures.

Three Bedroom



LEVEL 2 APT E2.2

LEVEL 4 APT E4.2

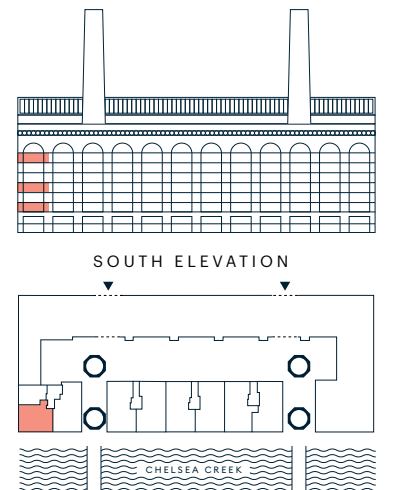
LEVEL 7 APT E7.2**

Windows denoted with ** do not open in these apartments

Window denoted with ** do not open in apartment E7.2 only



Living / Dining	5.6m x 4.6m	18'4" x 15'1"
Kitchen	2.3m x 3.5m	7'5" x 11'5"
Principal bedroom	3.6m x 3.4m	11'8" x 11'2"
Bedroom 2	3.4m x 2.8m	11'2" x 9'2"
Study / Bedroom	3.1m x 2.8m	10'2" x 9'2"
Apartment area	103.8 sq m	1,118 sq ft
Balcony	17.3 sq m	187 sq ft
Total area	121.1 sq m	1,305 sq ft



W Wardrobe, WM Washing machine, TD Tumble dryer, HIU Heat interface unit, HAS Home Automation System. Floor plans shown are for approximate measurements only. Exact layouts and sizes may vary. Please refer to the area schedule at the front of the brochure for exact area figures.

Three Bedroom



LEVEL 3 APT E3.2

LEVEL 5 APT E5.2

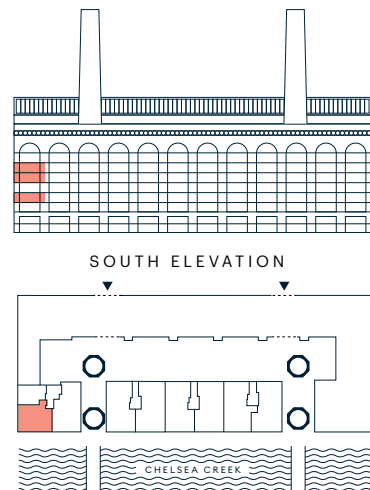
LEVEL 6 APT E6.2*

Windows denoted with ** do not open in these apartments

*AW Arched windows to apartment E6.2 only



Living / Dining	6.3m x 4.6m	20'7" x 15'1"
Kitchen	2.3m x 3.5m	7'5" x 11'5"
Principal bedroom	4.1m x 3.6m	13'5" x 11'8"
Bedroom 2	2.8m x 3.4m	9'2" x 11'2"
Study / Bedroom	3.1m x 2.8m	10'2" x 9'2"
Apartment area	103.8 sq m	1,118 sq ft
Balcony	17.3 sq m	187 sq ft
Total area	121.1 sq m	1,305 sq ft



W Wardrobe, WM Washing machine, TD Tumble dryer, HIU Heat interface unit, HAS Home Automation System. Floor plans shown are for approximate measurements only. Exact layouts and sizes may vary. Please refer to the area schedule at the front of the brochure for exact area figures.

Three Bedroom

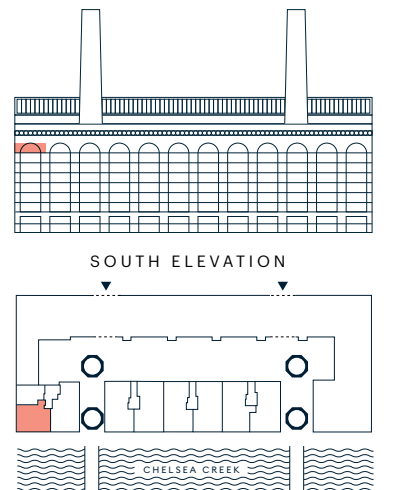


LEVEL 8 APT E8.2

Windows denoted with ** do not open



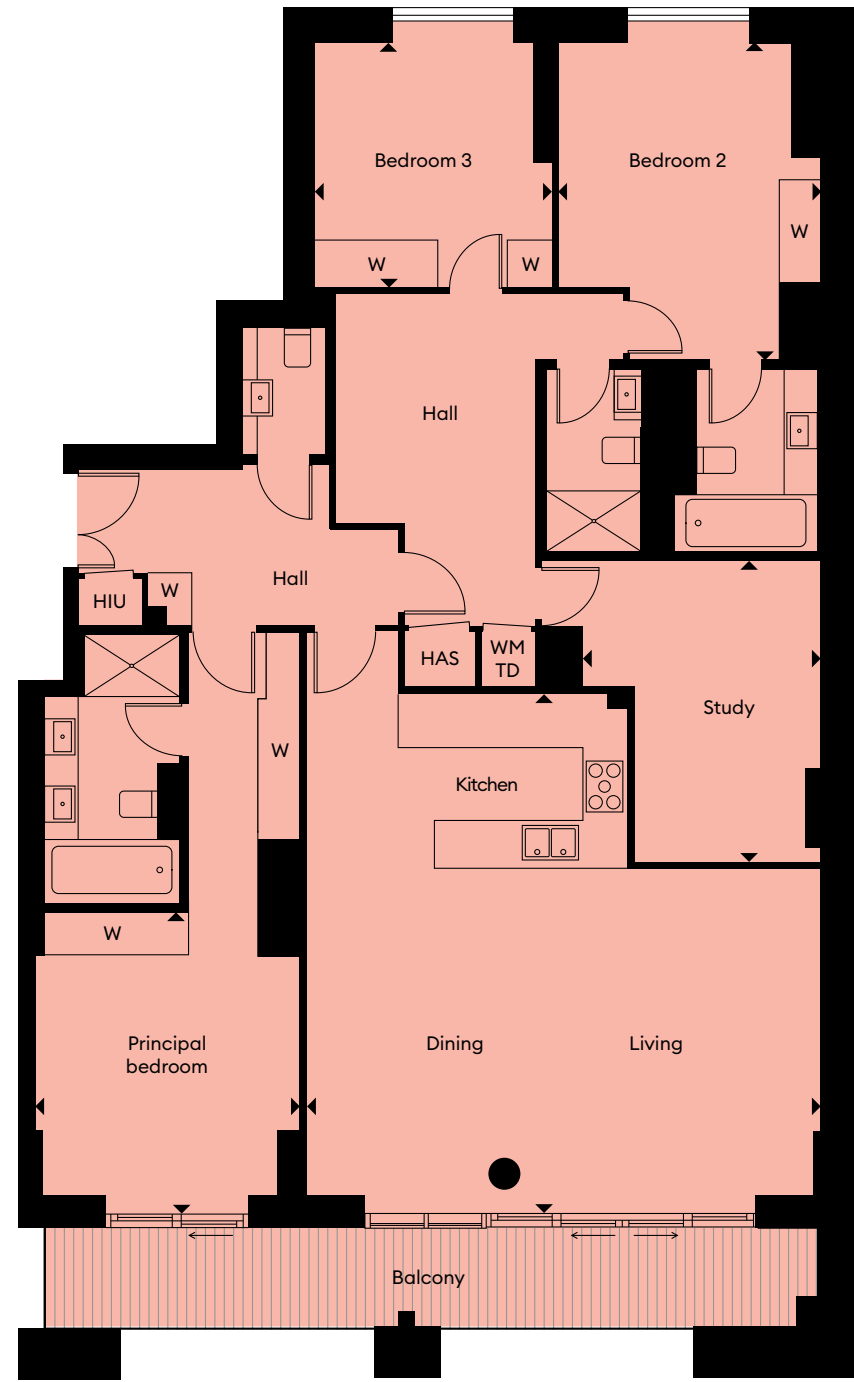
Living / Dining	6.3m x 4.6m	20'7" x 15'1"
Kitchen	2.3m x 3.5m	7'5" x 11'5"
Principal bedroom	4.1m x 3.7m	13'5" x 12'1"
Bedroom 2	2.8m x 3.4m	9'2" x 11'2"
Study / Bedroom	2.8m x 3.1m	9'2" x 10'2"
Apartment area	105.2 sq m	1,133 sq ft
Balcony	17.7 sq m	191 sq ft
Total area	122.9 sq m	1,324 sq ft



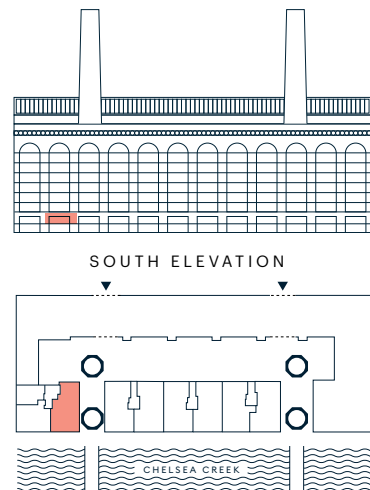
W Wardrobe, WM Washing machine, TD Tumble dryer, HIU Heat interface unit, HAS Home Automation System, AW Arched window. Floor plans shown are for approximate measurements only. Exact layouts and sizes may vary. Please refer to the area schedule at the front of the brochure for exact area figures.

Three Bedroom + Study

LEVEL 1 APT E1.1



Living / Dining / Kitchen	7.1m x 7.1m	23'3" x 23'3"
Principal bedroom	4.1m x 3.6m	13'5" x 11'8"
Bedroom 2	3.6m x 4.4m	11'8" x 14'4"
Bedroom 3	3.3m x 3.3m	10'8" x 10'8"
Study	3.3m x 4.1m	10'8" x 13'5"
Apartment area	153.1 sq m	1,648 sq ft
Balcony	14.8 sq m	159 sq ft
Total area	167.9 sq m	1,807 sq ft



W Wardrobe, WM Washing machine, TD Tumble dryer, HIU Heat interface unit, HAS Home Automation System. Floor plans shown are for approximate measurements only. Exact layouts and sizes may vary. Please refer to the area schedule at the front of the brochure for exact area figures.

Three Bedroom + Study

LEVEL 2 APT E2.1

LEVEL 3 APT E3.1

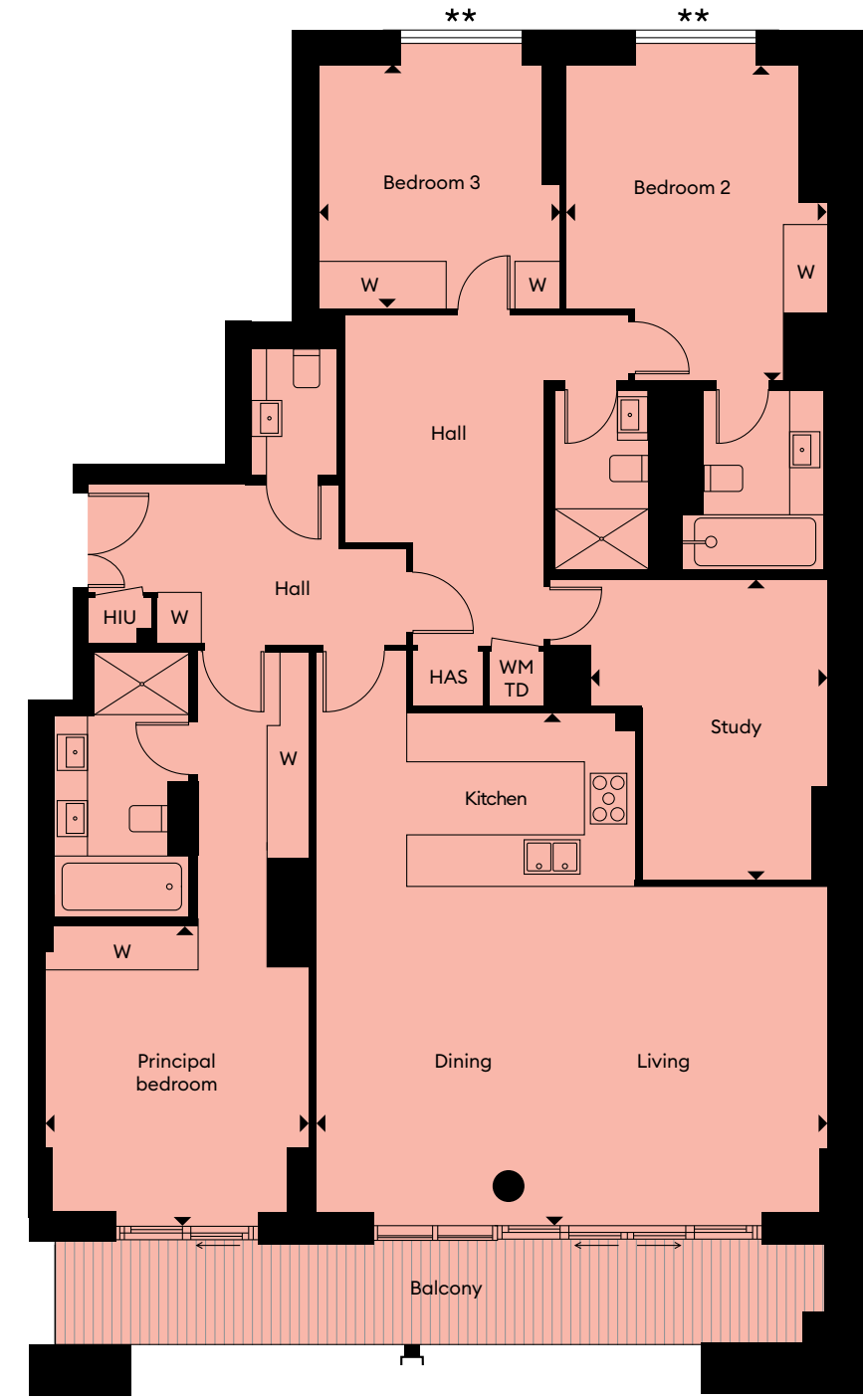
LEVEL 4 APT E4.1

LEVEL 5 APT E5.1

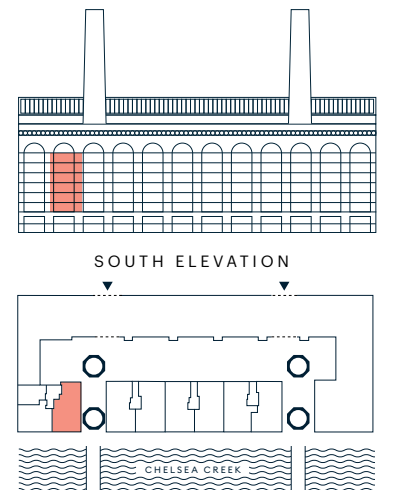
LEVEL 6 APT E6.1**

LEVEL 7 APT E7.1**

Windows denoted with ** do not open in these apartments



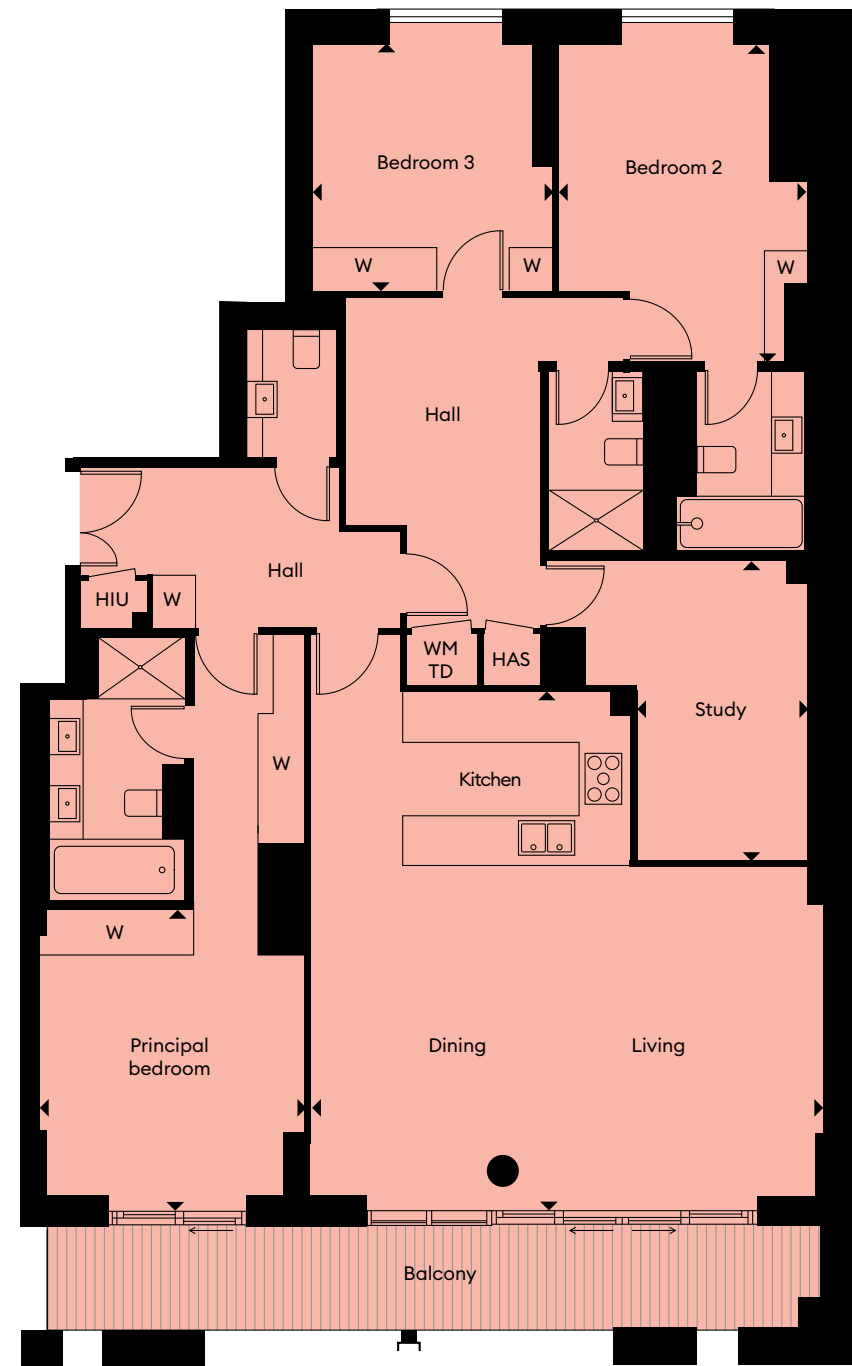
Living / Dining / Kitchen	7.1m x 7.1m	23'3" x 23'3"
Principal bedroom	3.6m x 4.1m	11'8" x 13'5"
Bedroom 2	3.6m x 4.4m	11'8" x 14'4"
Bedroom 3	3.3m x 3.3m	10'8" x 10'8"
Study	3.3m x 4.1m	10'8" x 13'5"
Apartment area	153.6 sq m	1,654 sq ft
Balcony	14.7 sq m	159 sq ft
Total area	168.3 sq m	1,813 sq ft



W Wardrobe, WM Washing machine, TD Tumble dryer, HIU Heat interface unit, HAS Home Automation System. Floor plans shown are for approximate measurements only. Exact layouts and sizes may vary. Please refer to the area schedule at the front of the brochure for exact area figures.

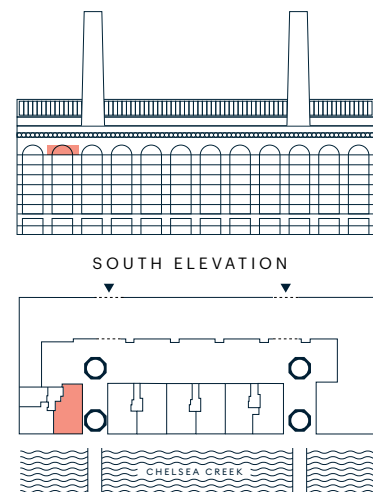
Three Bedroom + Study

LEVEL 8 APT E8.1



POWERHOUSE

Living / Dining / Kitchen	7.1m x 7.1m	23'3" x 23'3"
Principal bedroom	3.6m x 4.1m	11'8" x 13'5"
Bedroom 2	3.4m x 4.5m	11'2" x 14'8"
Bedroom 3	3.3m x 3.5m	10'8" x 11'5"
Study	2.3m x 4.1m	7'5" x 13'5"
Apartment area	150.6 sq m	1,621 sq ft
Balcony	14.7 sq m	159 sq ft
Total area	165.3 sq m	1,780 sq ft



W Wardrobe, WM Washing machine, TD Tumble dryer, HIU Heat interface unit, HAS Home Automation System. Floor plans shown are for approximate measurements only. Exact layouts and sizes may vary. Please refer to the area schedule at the front of the brochure for exact area figures.



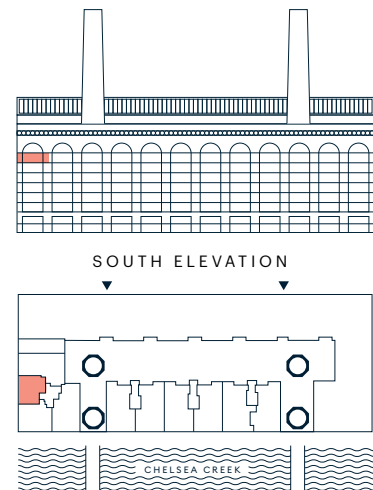
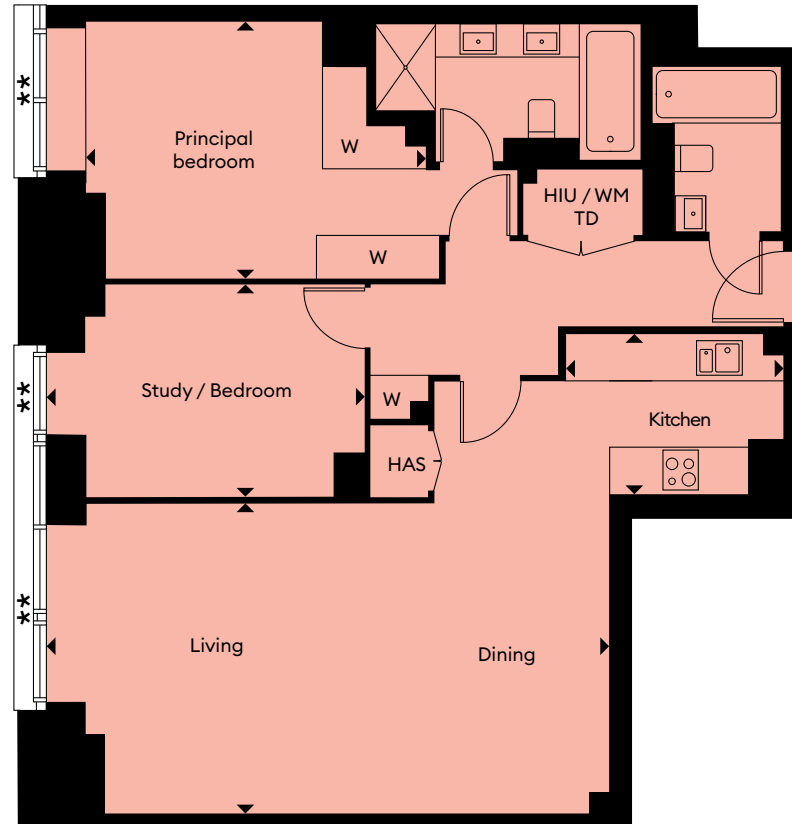
Computer generated image is indicative only

Two Bedroom



LEVEL 7 APT E7.3

Windows denoted with **
do not open in these
apartments



Living / Dining	7.8m x 4.3m	25'6" x 14'1"
Kitchen	3.0m x 2.3m	9'8" x 7'5"
Principal Bedroom	4.9m x 3.5m	16'1" x 11'5"
Study / Bedroom	4.4m x 2.9m	14'4" x 9'5"
Total area	97.3 sq m	1,047 sq ft

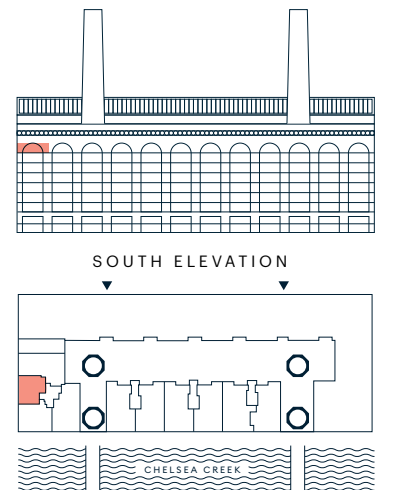
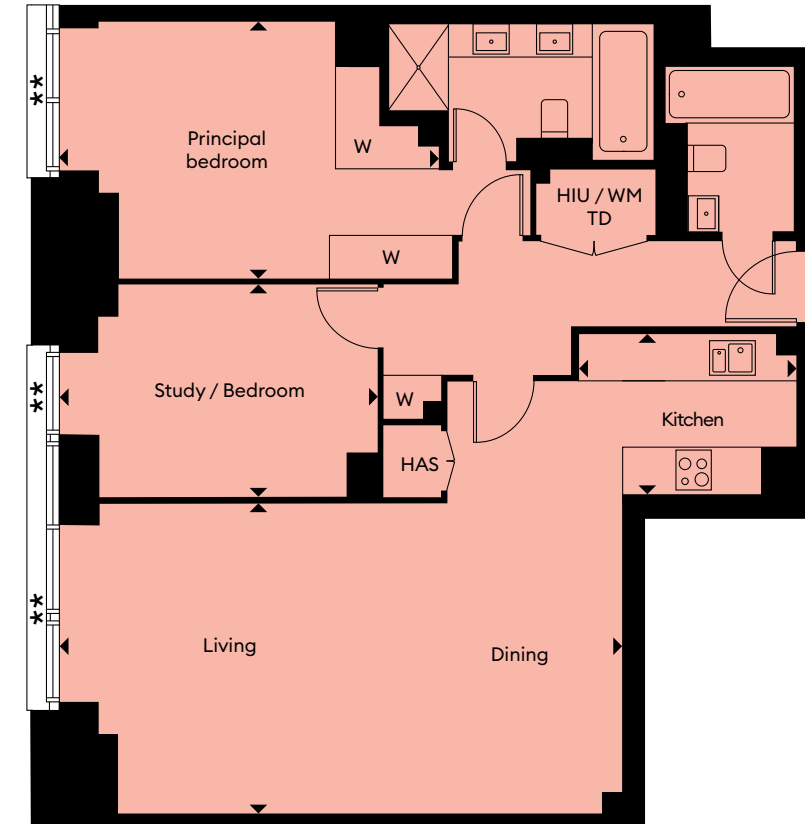
W Wardrobe, WM Washing machine, TD Tumble dryer, HIU Heat interface unit, HAS Home Automation System.
Floor plans shown are for approximate measurements only. Exact layouts and sizes may vary. Please refer to the area schedule at the front of the brochure for exact area figures.

Two Bedroom



LEVEL 8 APT E8.3

Windows denoted with **
do not open in these
apartments



Living / Dining	7.8m x 4.3m	25'6" x 14'1"
Kitchen	3.0m x 2.3m	9'8" x 7'5"
Principal Bedroom	5.3m x 3.5m	17'4" x 11'5"
Study / Bedroom	4.4m x 2.9m	14'4" x 9'5"
Total area	97.3 sq m	1,048 sq ft

W Wardrobe, WM Washing machine, TD Tumble dryer, HIU Heat interface unit, HAS Home Automation System.
Floor plans shown are for approximate measurements only. Exact layouts and sizes may vary. Please refer to the area schedule at the front of the brochure for exact area figures.

Four Bedroom

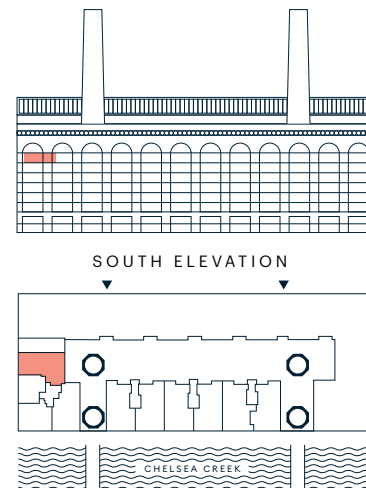


LEVEL 7 APT E7.4

Windows denoted with ** do not open in this apartment



Living / Dining / Kitchen	8.4m x 8.5m	27'6" x 27'9"
Principal bedroom	5.0m x 3.6m	16'4" x 11'8"
Bedroom 2	3.2m x 3.3m	10'5" x 10'8"
Bedroom 3	3.4m x 2.7m	11'2" x 8'9"
Study / Bedroom	3.8m x 2.8m	12'5" x 9'2"
Total area	173.6 sq m	1,869 sq ft



W Wardrobe, WM Washing machine, TD Tumble dryer, HIU Heat interface unit, HAS Home Automation System. Floor plans shown are for approximate measurements only. Exact layouts and sizes may vary. Please refer to the area schedule at the front of the brochure for exact area figures.

Four Bedroom

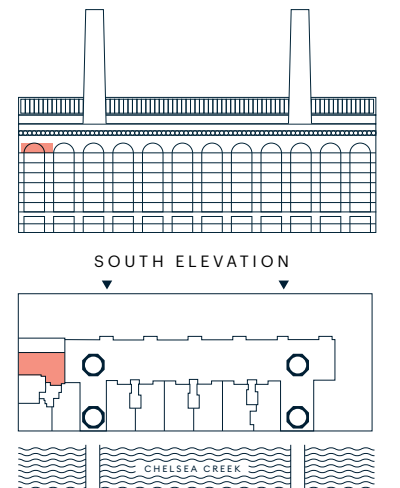


LEVEL 8 APT E8.4

Windows denoted with ** do not open in this apartment



Living / Dining / Kitchen	8.7m x 8.5m	28'5" x 27'9"
Principal bedroom	4.9m x 3.6m	16'1" x 11'8"
Bedroom 2	3.2m x 3.3m	10'5" x 10'8"
Bedroom 3	3.3m x 2.7m	10'8" x 8'9"
Study / Bedroom	3.8m x 2.8m	12'5" x 9'2"
Total area	173.0 sq m	1,863 sq ft

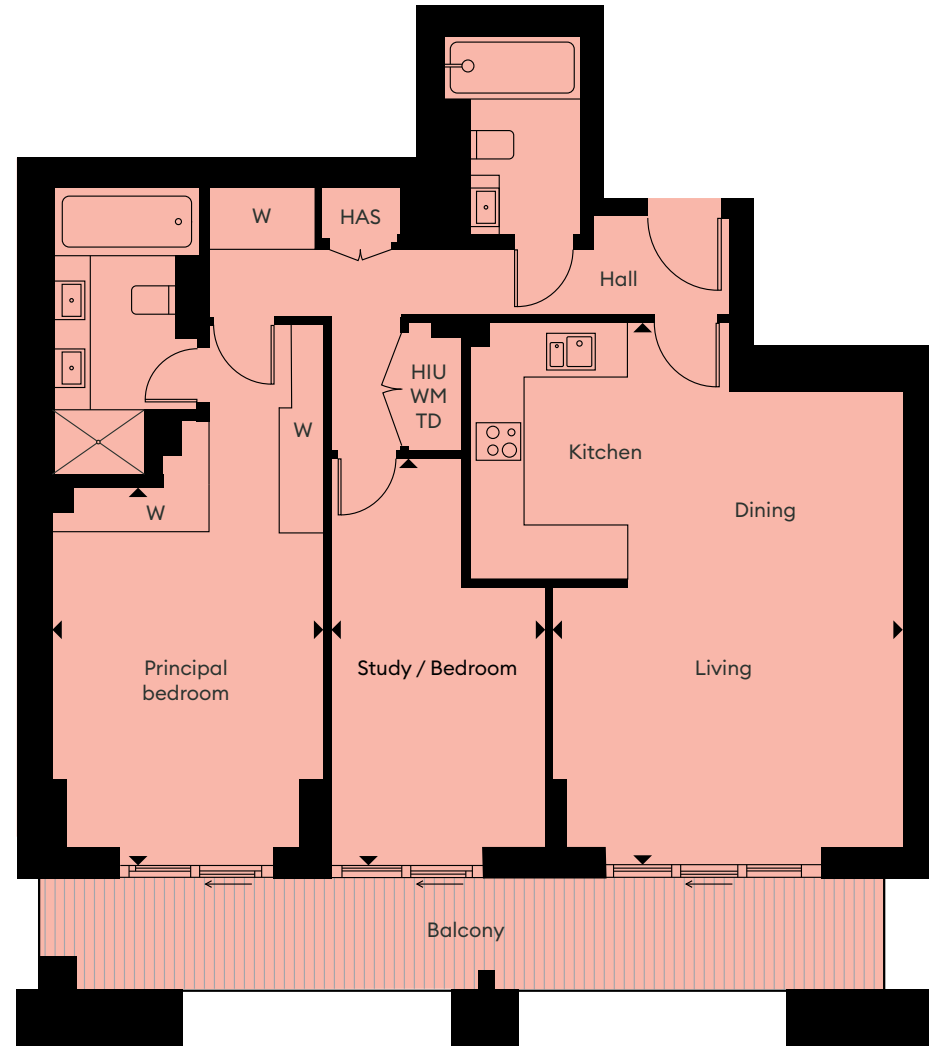


W Wardrobe, WM Washing machine, TD Tumble dryer, HIU Heat interface unit, HAS Home Automation System, AW Arched window. Floor plans shown are for approximate measurements only. Exact layouts and sizes may vary. Please refer to the area schedule at the front of the brochure for exact area figures.

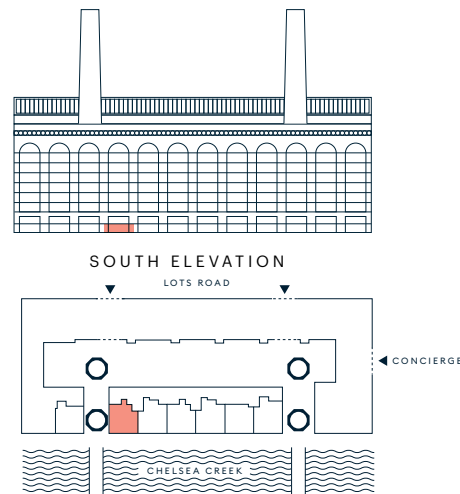
Two Bedroom



LEVEL G APT DG.2



Living / Dining / Kitchen	
4.6m x 7.0m	15'1" x 23'0"
Principal bedroom	
3.6m x 4.9m	11'8" x 16'1"
Study / Bedroom	
2.7m x 5.2m	8'9" x 17'1"
Apartment area	
93.6 sq m	1,008 sq ft
Balcony	
15.4 sq m	166 sq ft
Total area	
109.0 sq m	1,174 sq ft



W Wardrobe, WM Washing machine, TD Tumble dryer, HIU Heat interface unit, HAS Home Automation System.
Floor plans shown are for approximate measurements only. Exact layouts and sizes may vary. Please refer to the area schedule at the front of the brochure for exact area figures.

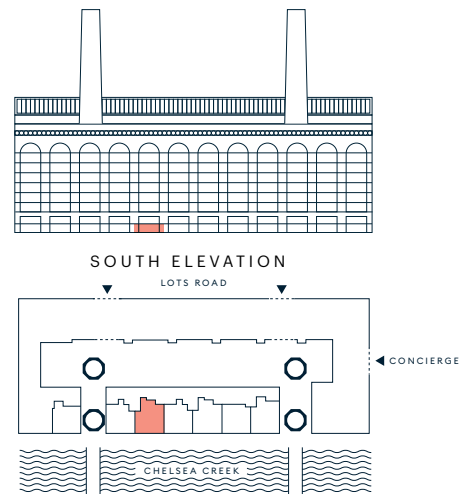
Two Bedroom



LEVEL G APT DG.1



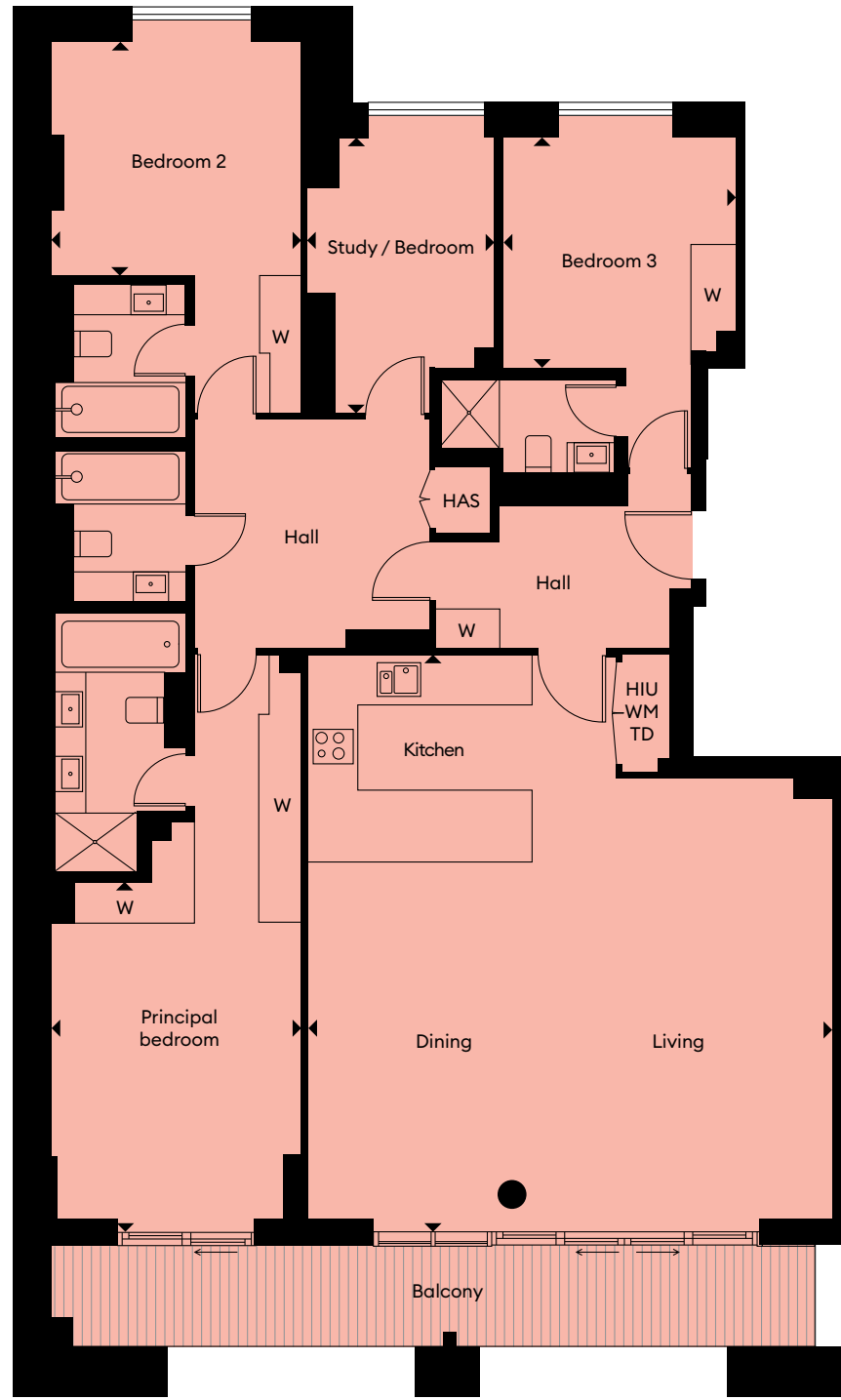
Living / Dining / Kitchen	
4.8m x 7.1m	15'7" x 23'3"
Principal bedroom	
3.6m x 4.9m	11'8" x 16'1"
Study / Bedroom	
2.8m x 5.4m	9'2" x 17'7"
Apartment area	
99.7 sq m	1,074 sq ft
Balcony	
15.3 sq m	165 sq ft
Total area	
115.0 sq m	1,239 sq ft



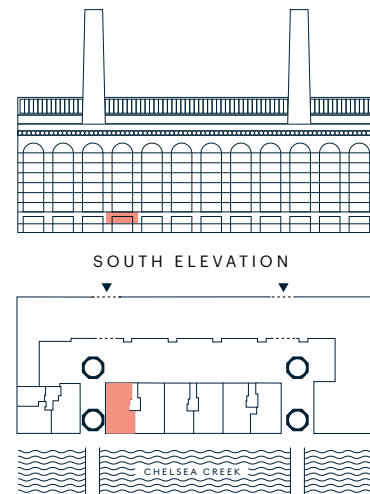
W Wardrobe, WM Washing machine, TD Tumble dryer, HIU Heat interface unit, HAS Home Automation System.
Floor plans shown are for approximate measurements only. Exact layouts and sizes may vary. Please refer to the area schedule at the front of the brochure for exact area figures.

Four Bedroom

LEVEL 1 APT D1.2



Living / Dining / Kitchen	
7.4m x 8.1m	24'3" x 26'6"
Principal bedroom	
3.6m x 5.0m	11'8" x 16'4"
Bedroom 2	
3.6m x 3.2m	11'8" x 10'5"
Bedroom 3	
3.4m x 3.3m	11'2" x 10'8"
Study / Bedroom	
2.6m x 3.9m	8'5" x 12'8"
Apartment area	
161.0 sq m	1,733 sq ft
Balcony	
15.0 sq m	161 sq ft
Total area	
176 sq m	1,894 sq ft



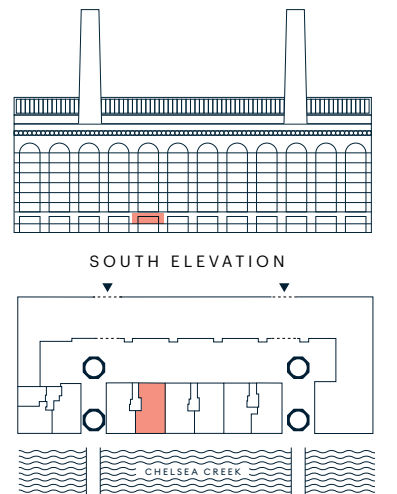
W Wardrobe, WM Washing machine, TD Tumble dryer, HIU Heat interface unit, HAS Home Automation System.
Floor plans shown are for approximate measurements only. Exact layouts and sizes may vary. Please refer to the area schedule at the front of the brochure for exact area figures.

Four Bedroom

LEVEL 1 APT D1.1



Living / Dining / Kitchen	
7.6m x 8.1m	24'9" x 26'6"
Principal bedroom	
3.7m x 4.9m	12'1" x 16'1"
Bedroom 2	
3.6m x 3.2m	11'8" x 10'5"
Bedroom 3	
3.5m x 3.4m	11'5" x 11'2"
Study / Bedroom	
2.6m x 3.9m	8'5" x 12'8"
Apartment area	
163.8 sq m	1,763 sq ft
Balcony	
16.0 sq m	172 sq ft
Total area	
179.7 sq m	1,935 sq ft

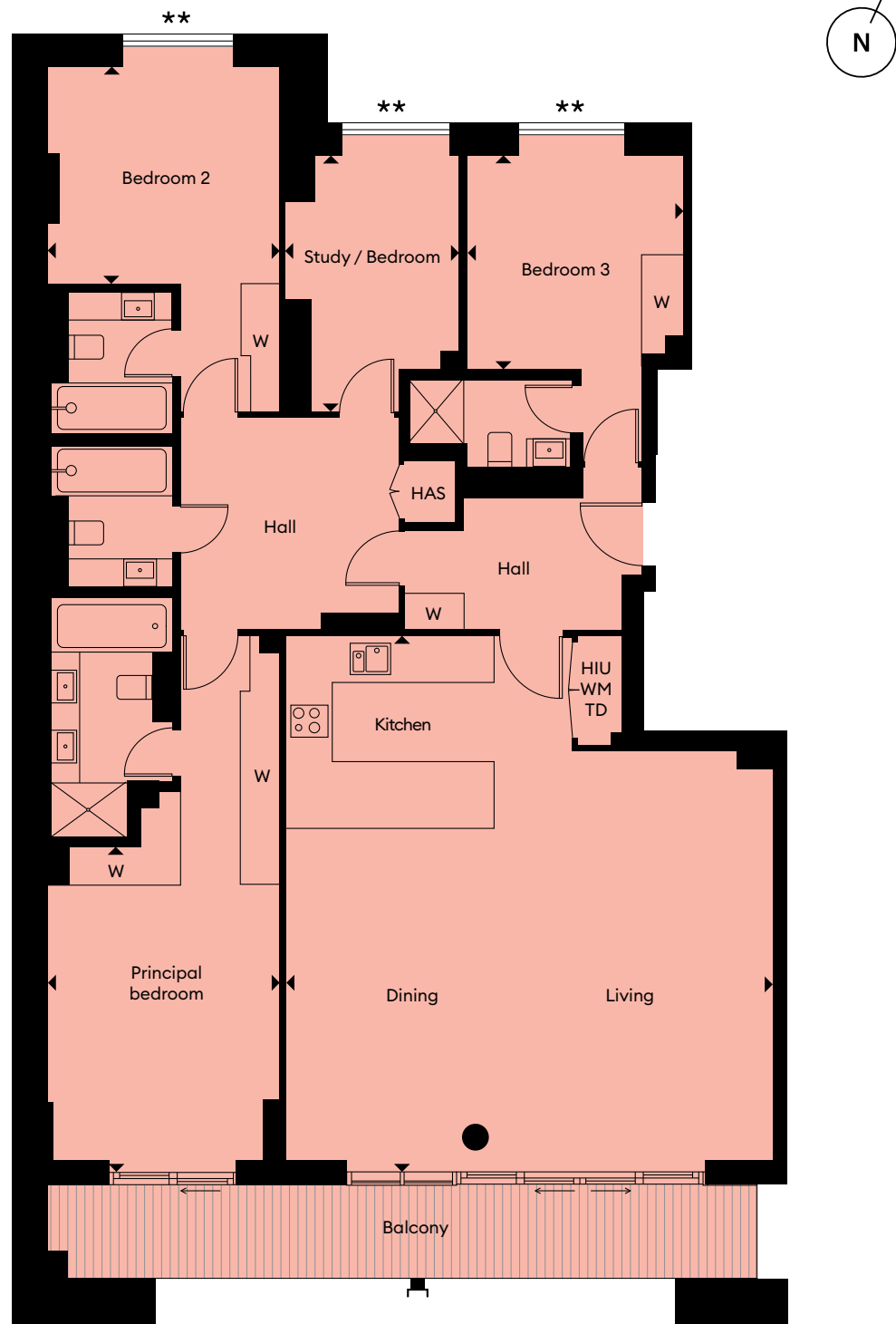


W Wardrobe, WM Washing machine, TD Tumble dryer, HIU Heat interface unit, HAS Home Automation System.
Floor plans shown are for approximate measurements only. Exact layouts and sizes may vary. Please refer to the area schedule at the front of the brochure for exact area figures.

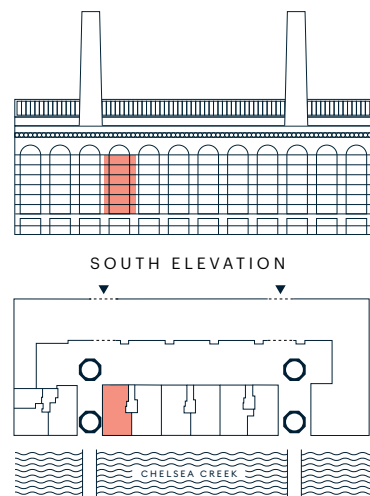
Four Bedroom

- LEVEL 2 APT D2.2
- LEVEL 3 APT D3.2
- LEVEL 4 APT D4.2
- LEVEL 5 APT D5.2
- LEVEL 6 APT D6.2**
- LEVEL 7 APT D7.2**

Windows denoted with ** do not open in these apartments



Living / Dining / Kitchen	7.4m x 8.1m	24'3" x 26'6"
Principal bedroom	3.6m x 4.9m	11'8" x 16'1"
Bedroom 2	3.6m x 3.2m	11'8" x 10'5"
Bedroom 3	3.4m x 3.3m	11'2" x 10'8"
Study / Bedroom	2.6m x 3.9m	8'5" x 12'8"
Apartment area	161.0 sq m	1,734 sq ft
Balcony	15.0 sq m	161 sq ft
Total area	176 sq m	1,895 sq ft

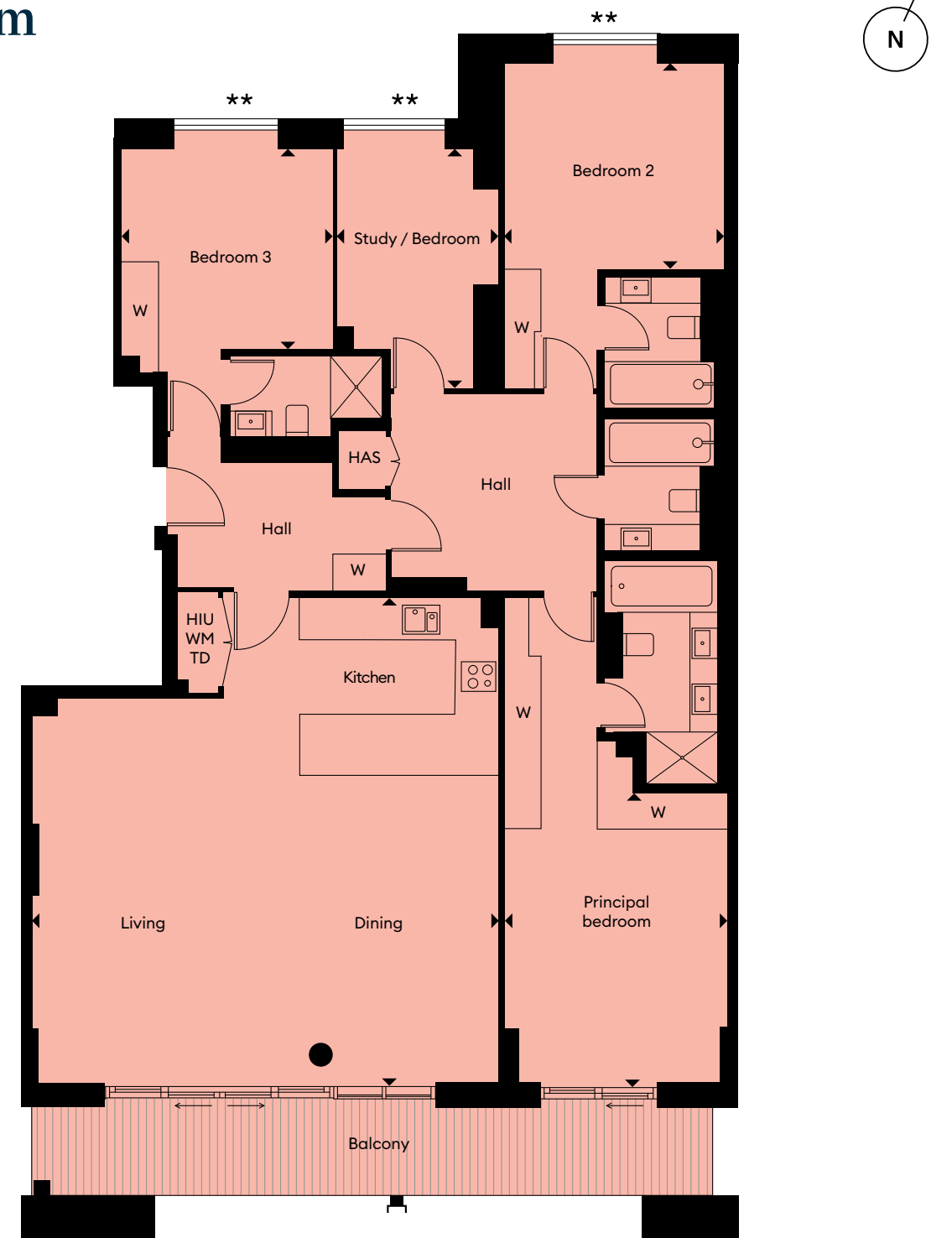


W Wardrobe, WM Washing machine, TD Tumble dryer, HIU Heat interface unit, HAS Home Automation System. Floor plans shown are for approximate measurements only. Exact layouts and sizes may vary. Please refer to the area schedule at the front of the brochure for exact area figures.

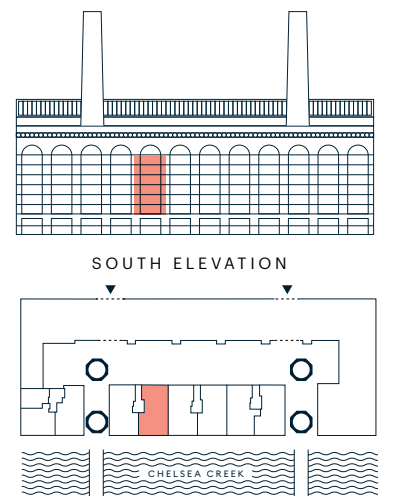
Four Bedroom

- LEVEL 2 APT D2.1
- LEVEL 3 APT D3.1
- LEVEL 4 APT D4.1
- LEVEL 5 APT D5.1
- LEVEL 6 APT D6.1**
- LEVEL 7 APT D7.1**

Windows denoted with ** do not open in these apartments



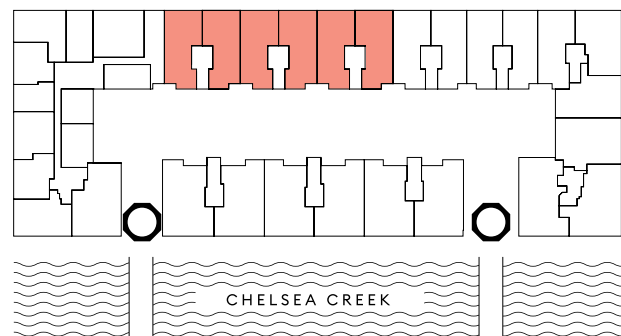
Living / Dining / Kitchen	7.6m x 8.1m	24'9" x 26'6"
Principal bedroom	3.7m x 4.9m	12'1" x 16'1"
Bedroom 2	3.6m x 3.2m	11'8" x 10'5"
Bedroom 3	3.5m x 3.3m	11'5" x 10'8"
Study / Bedroom	2.6m x 3.9m	8'5" x 12'8"
Apartment area	163.8 sq m	1,764 sq ft
Balcony	16.0 sq m	172 sq ft
Total area	179.8 sq m	1,936 sq ft



W Wardrobe, WM Washing machine, TD Tumble dryer, HIU Heat interface unit, HAS Home Automation System. Floor plans shown are for approximate measurements only. Exact layouts and sizes may vary. Please refer to the area schedule at the front of the brochure for exact area figures.

CHELSEA VIEW.

Luxury, space and contemporary design looking out over Chelsea.

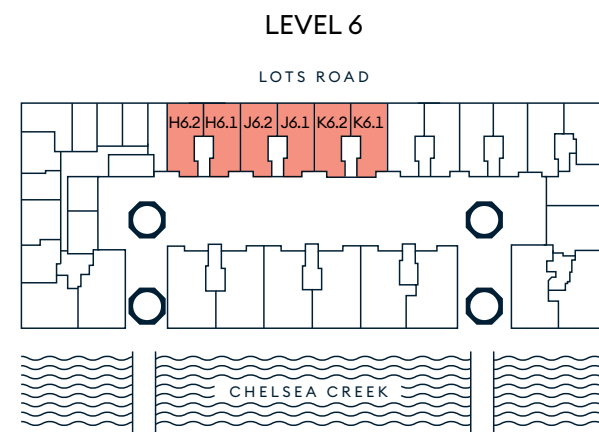
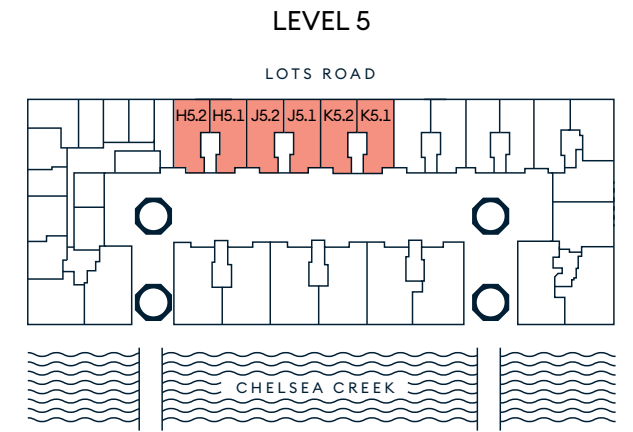
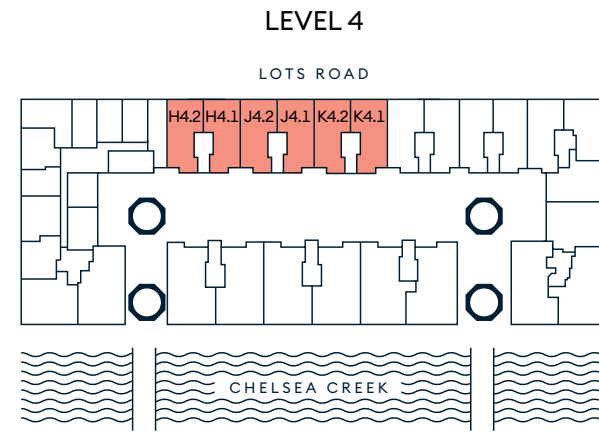
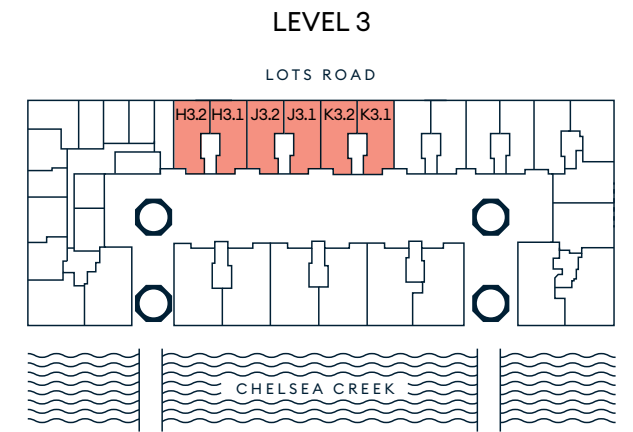
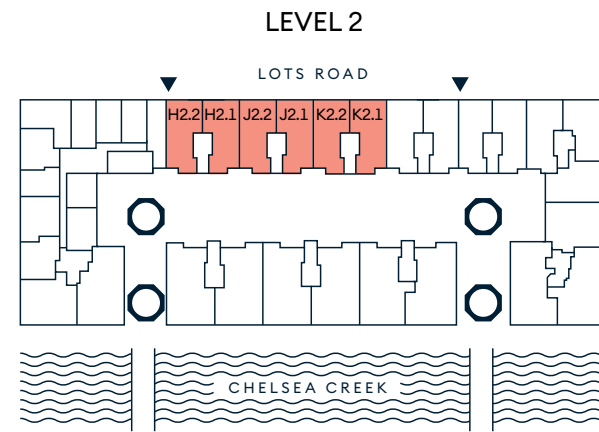


Computer generated image is indicative only

CHELSEA VIEW APARTMENT LOCATOR.



Apartment	Level	Bedrooms	Apartment area (sq m)	Apartment area (sq ft)	Page
H2.1	2	Three	121.6	1,309	43
H2.2	2	Three	120.0	1,292	42
J2.1	2	Three	121.1	1,304	49
J2.2	2	Three	120.6	1,298	48
K2.1	2	Three	121.1	1,304	55
K2.2	2	Three	120.9	1,302	54
H3.1	3	Three	120.8	1,301	45
H3.2	3	Three	120.0	1,292	44
J3.1	3	Three	121.1	1,304	51
J3.2	3	Three	121.3	1,306	50
K3.1	3	Three	121.1	1,304	57
K3.2	3	Three	120.9	1,302	56
H4.1	4	Three	120.8	1,301	45
H4.2	4	Three	120.0	1,292	44
J4.1	4	Three	121.1	1,304	51
J4.2	4	Three	121.3	1,306	50
K4.1	4	Three	121.1	1,304	57
K4.2	4	Three	120.9	1,302	56
H5.1	5	Three	120.2	1,295	45
H5.2	5	Three	119.4	1,285	44
J5.1	5	Three	120.5	1,298	51
J5.2	5	Three	120.7	1,299	50
K5.1	5	Three	120.5	1,298	57
K5.2	5	Three	120.3	1,296	56
H6.1	6	Three	117.6	1,266	47
H6.2	6	Three	116.0	1,249	46
J6.1	6	Three	117.2	1,263	53
J6.2	6	Three	116.6	1,256	52
K6.1	6	Three	117.4	1,264	59
K6.2	6	Three	117.2	1,262	58



Three Bedroom



LEVEL 2 APT H2.2



Living / Dining / Kitchen	4.9m x 9.2m	16'1" x 30'2"
Principal Bedroom	3.5m x 3.8m	11'5" x 12'5"
Bedroom 2	3.2m x 3.3m	10'5" x 10'8"
Study / Bedroom	3.6m x 2.5m	11'8" x 8'2"
Total area	120.0 sq m	1,292 sq ft

W Wardrobe, WM Washing machine, TD Tumble dryer, HIU Heat interface unit, HAS Home Automation System. Floor plans shown are for approximate measurements only. Exact layouts and sizes may vary. Please refer to the area schedule at the front of the brochure for exact area figures.

Three Bedroom

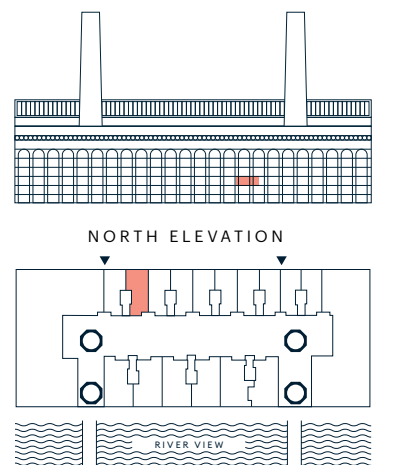
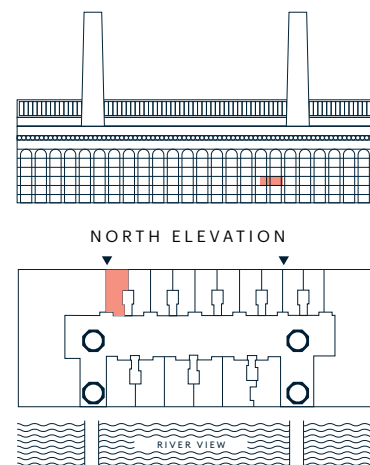


LEVEL 2 APT H2.1



Living / Dining / Kitchen	4.9m x 9.2m	16'1" x 30'2"
Principal Bedroom	3.5m x 3.8m	11'5" x 12'5"
Bedroom 2	3.4m x 3.3m	11'2" x 10'8"
Study / Bedroom	3.6m x 2.5m	11'8" x 8'2"
Total area	121.6 sq m	1,309 sq ft

W Wardrobe, WM Washing machine, TD Tumble dryer, HIU Heat interface unit, HAS Home Automation System. Floor plans shown are for approximate measurements only. Exact layouts and sizes may vary. Please refer to the area schedule at the front of the brochure for exact area figures.



Three Bedroom

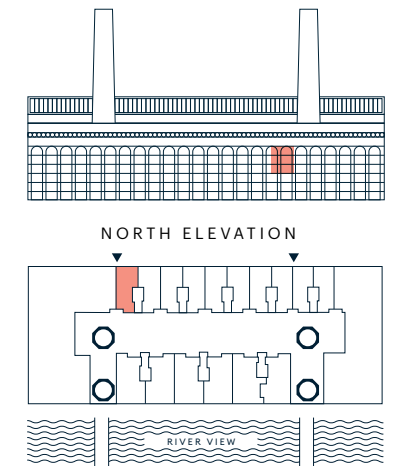


LEVEL 3 APT H3.2
 LEVEL 4 APT H4.2
 LEVEL 5 APT H5.2*

* Dotted area omitted in H5.2
 AW Arched windows to apartment H5.2 only
 Apartment area for H5.2 is 119.4 sq m / 1,285 sq ft



Living / Dining / Kitchen	4.9m x 9.7m	16'1" x 31'8"
Principal Bedroom	3.5m x 4.3m	11'5" x 14'1"
Bedroom 2	3.2m x 3.3m	10'5" x 10'8"
Study / Bedroom	3.6m x 2.5m	11'8" x 8'2"
*Study / Bedroom	3.3m x 2.5m	10'8" x 8'2"
Total area	120.0 sq m	1,292 sq ft



W Wardrobe, WM Washing machine, TD Tumble dryer, HIU Heat interface unit, HAS Home Automation System, AW Arched window. Floor plans shown are for approximate measurements only. Exact layouts and sizes may vary. Please refer to the area schedule at the front of the brochure for exact area figures.

Three Bedroom

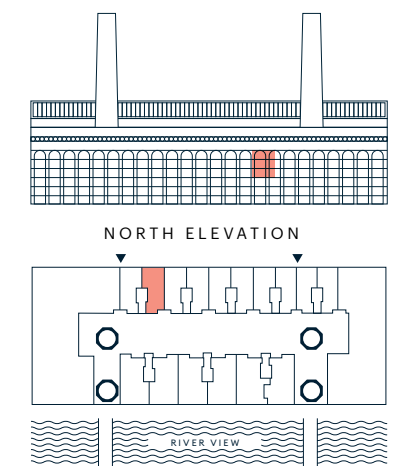


LEVEL 3 APT H3.1
 LEVEL 4 APT H4.1
 LEVEL 5 APT H5.1*

* Dotted area omitted in H5.1
 AW Arched windows to apartment H5.1 only
 Apartment area for H5.1 is 120.2 sq m / 1,295 sq ft



Living / Dining / Kitchen	4.9m x 9.7m	16'1" x 31'8"
Principal Bedroom	3.5m x 4.3m	11'5" x 14'1"
Bedroom 2	3.3m x 3.3m	10'8" x 10'8"
Study / Bedroom	3.6m x 2.5m	11'8" x 8'2"
*Study / Bedroom	3.3m x 2.5m	10'8" x 8'2"
Total area	120.8 sq m	1,301 sq ft



W Wardrobe, WM Washing machine, TD Tumble dryer, HIU Heat interface unit, HAS Home Automation System, AW Arched window. Floor plans shown are for approximate measurements only. Exact layouts and sizes may vary. Please refer to the area schedule at the front of the brochure for exact area figures.

Three Bedroom



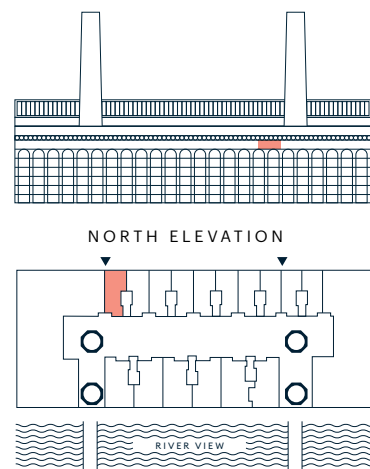
LEVEL 6 APT H6.2

Windows denoted with ** do not open in this apartment



Living / Dining / Kitchen	4.9m x 9.1m	16'1" x 29'9"
Principal Bedroom	3.5m x 3.7m	11'5" x 12'1"
Bedroom 2	3.2m x 3.3m	10'5" x 10'8"
Study / Bedroom	2.9m x 2.5m	9'5" x 8'2"
Total area	116 sq m	1,249 sq ft

W Wardrobe, WM Washing machine, TD Tumble dryer, HIU Heat interface unit, HAS Home Automation System. Floor plans shown are for approximate measurements only. Exact layouts and sizes may vary. Please refer to the area schedule at the front of the brochure for exact area figures.



Three Bedroom



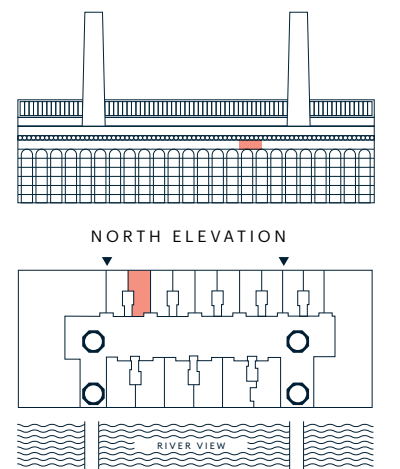
LEVEL 6 APT H6.1

Windows denoted with ** do not open in this apartment



Living / Dining / Kitchen	4.9m x 9.2m	16'0" x 30'2"
Principal Bedroom	3.5m x 3.7m	11'5" x 12'1"
Bedroom 2	3.4m x 3.3m	11'2" x 10'8"
Study / Bedroom	2.9m x 2.5m	9'5" x 8'2"
Total area	117.6 sq m	1,266 sq ft

W Wardrobe, WM Washing machine, TD Tumble dryer, HIU Heat interface unit, HAS Home Automation System. Floor plans shown are for approximate measurements only. Exact layouts and sizes may vary. Please refer to the area schedule at the front of the brochure for exact area figures.



Three Bedroom



LEVEL 2 APT J2.2



Living / Dining / Kitchen	4.9m x 9.2m	16'1" x 30'2"
Principal Bedroom	3.5m x 3.8m	11'5" x 12'5"
Bedroom 2	3.3m x 3.3m	10'8" x 10'8"
Study / Bedroom	3.6m x 2.5m	11'8" x 8'2"
Total area	120.6 sq m	1,298 sq ft

W Wardrobe, WM Washing machine, TD Tumble dryer, HIU Heat interface unit, HAS Home Automation System. Floor plans shown are for approximate measurements only. Exact layouts and sizes may vary. Please refer to the area schedule at the front of the brochure for exact area figures.

Three Bedroom

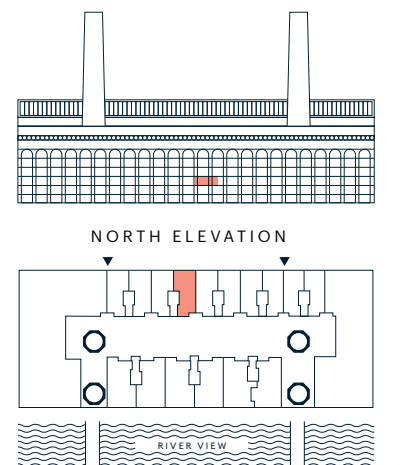
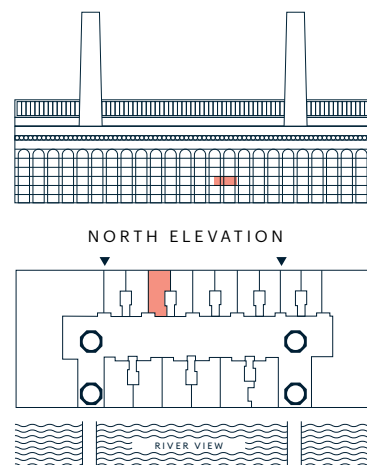


LEVEL 2 APT J2.1



Living / Dining / Kitchen	4.9m x 9.2m	16'1" x 30'2"
Principal Bedroom	3.5m x 3.8m	11'5" x 12'5"
Bedroom 2	3.3m x 3.3m	10'8" x 10'8"
Study / Bedroom	3.6m x 2.4m	11'8" x 7'9"
Total area	121.1 sq m	1,304 sq ft

W Wardrobe, WM Washing machine, TD Tumble dryer, HIU Heat interface unit, HAS Home Automation System. Floor plans shown are for approximate measurements only. Exact layouts and sizes may vary. Please refer to the area schedule at the front of the brochure for exact area figures.



Three Bedroom



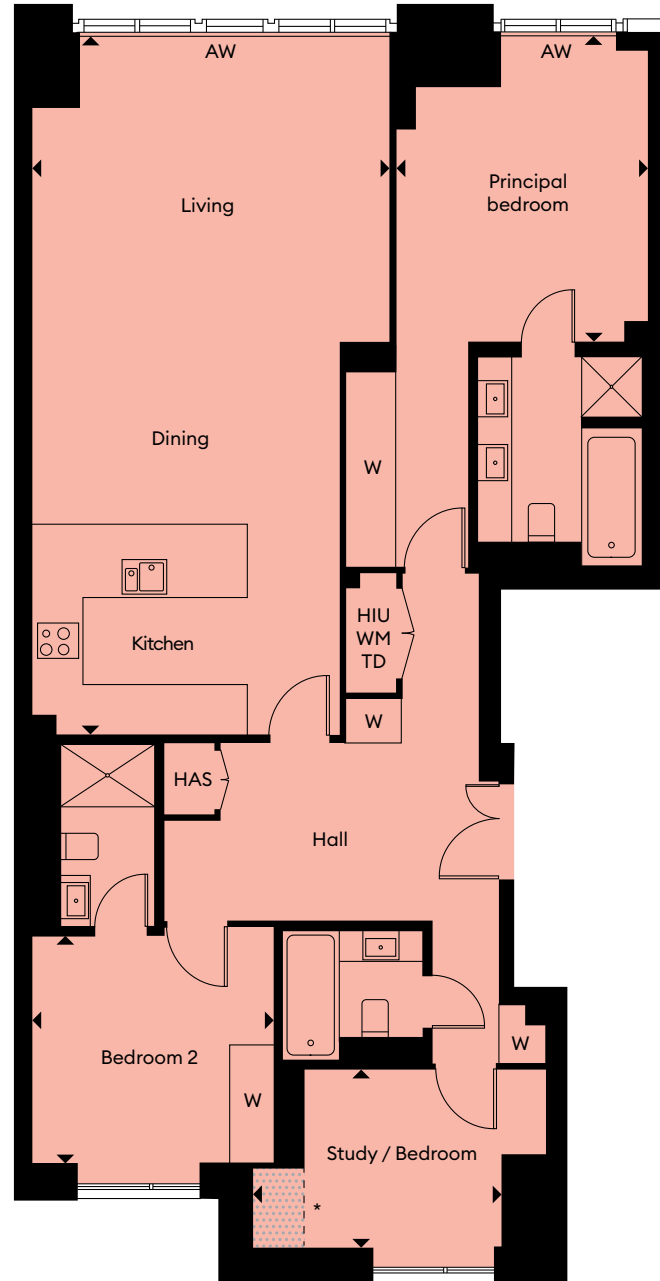
LEVEL 3 APT J3.2

LEVEL 4 APT J4.2

LEVEL 5 APT J5.2*

* Dotted area omitted in J5.2
AW Arched windows to apartment J5.2 only

Apartment area for J5.2 is
 120.7 sq m / 1,299 sq ft



Living / Dining / Kitchen	
5.0m x 9.7m	16'4" x 31'8"
Principal Bedroom	
3.5m x 4.3m	11'5" x 14'1"
Bedroom 2	
3.3m x 3.3m	10'8" x 10'8"
Study / Bedroom	
3.6m x 2.5m	10'8" x 8'2"
*Study / Bedroom	
2.9m x 2.5m	9'5" x 8'2"
Total area	
121.3 sq m	1,306 sq ft

W Wardrobe, WM Washing machine, TD Tumble dryer, HIU Heat interface unit, HAS Home Automation System, AW Arched window.
 Floor plans shown are for approximate measurements only. Exact layouts and sizes may vary. Please refer to the area schedule at the front of the brochure for exact area figures.

Three Bedroom



LEVEL 3 APT J3.1

LEVEL 4 APT J4.1

LEVEL 5 APT J5.1*

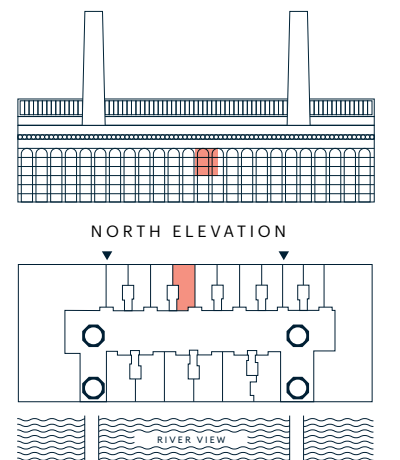
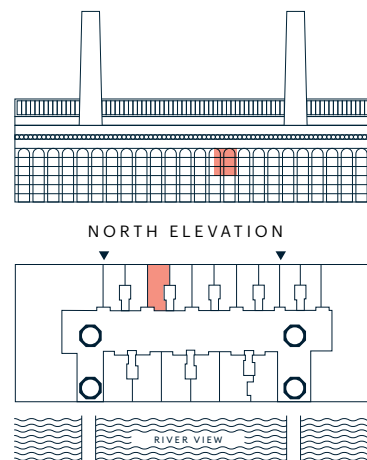
* Dotted area omitted in J5.1
AW Arched windows to apartment J5.1 only

Apartment area for J5.1 is
 120.5 sq m / 1,298 sq ft



Living / Dining / Kitchen	
4.9m x 9.7m	16'1" x 31'8"
Principal Bedroom	
3.5m x 4.3m	11'5" x 14'1"
Bedroom 2	
3.3m x 3.3m	10'8" x 10'8"
Study / Bedroom	
3.6m x 2.5m	10'8" x 8'2"
*Study / Bedroom	
2.9m x 2.5m	9'5" x 8'2"
Total area	
121.1 sq m	1,304 sq ft

W Wardrobe, WM Washing machine, TD Tumble dryer, HIU Heat interface unit, HAS Home Automation System.
 Floor plans shown are for approximate measurements only. Exact layouts and sizes may vary. Please refer to the area schedule at the front of the brochure for exact area figures.



Three Bedroom



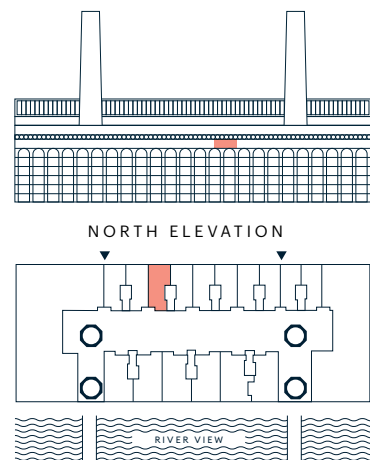
LEVEL 6 APT J6.2

Windows denoted with ** do not open in this apartment



Living / Dining / Kitchen	4.9m x 9.2m	16'1" x 30'2"
Principal Bedroom	3.5m x 3.8m	11'5" x 12'5"
Bedroom 2	3.3m x 3.3m	10'8" x 10'8"
Study / Bedroom	2.9m x 2.5m	9'5" x 8'2"
Total area	116.6 sq m	1,256 sq ft

W Wardrobe, WM Washing machine, TD Tumble dryer, HIU Heat interface unit, HAS Home Automation System, AW Arched window. Floor plans shown are for approximate measurements only. Exact layouts and sizes may vary. Please refer to the area schedule at the front of the brochure for exact area figures.



Three Bedroom



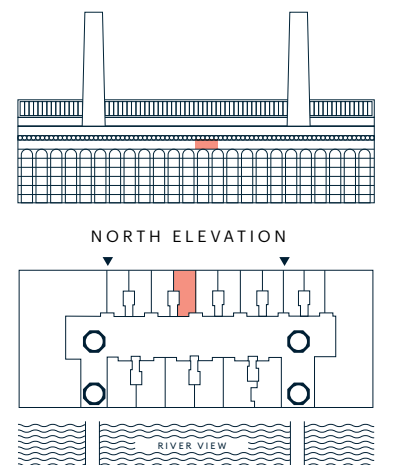
LEVEL 6 APT J6.1

Windows denoted with ** do not open in this apartment



Living / Dining / Kitchen	4.9m x 9.2m	16'1" x 30'2"
Principal Bedroom	3.5m x 3.8m	11'5" x 12'5"
Bedroom 2	3.3m x 3.3m	10'8" x 10'8"
Study / Bedroom	2.9m x 2.4m	9'5" x 7'9"
Total area	117.2 sq m	1,263 sq ft

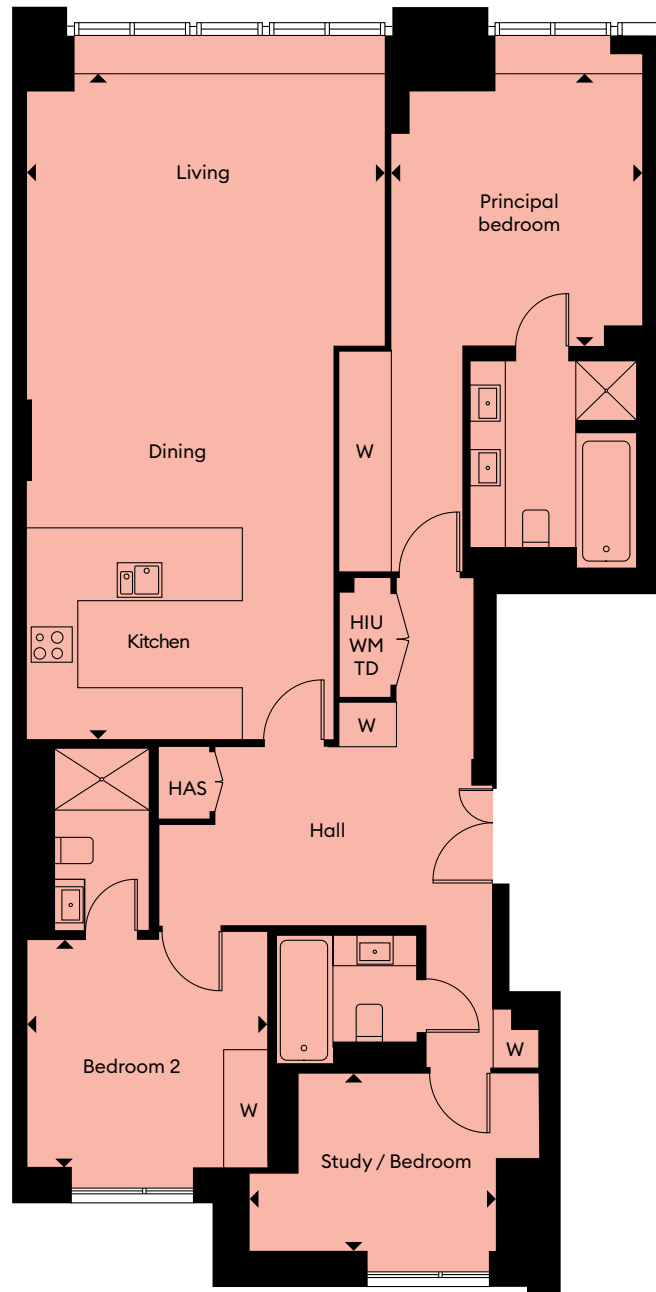
W Wardrobe, WM Washing machine, TD Tumble dryer, HIU Heat interface unit, HAS Home Automation System. Floor plans shown are for approximate measurements only. Exact layouts and sizes may vary. Please refer to the area schedule at the front of the brochure for exact area figures.



Three Bedroom



LEVEL 2 APT K2.2



Living / Dining / Kitchen	4.9m x 9.2m	16'1" x 30'2"
Principal Bedroom	3.5m x 3.8m	11'5" x 12'5"
Bedroom 2	3.3m x 3.3m	10'8" x 10'8"
Study / Bedroom	3.6m x 2.5m	11'8" x 8'2"
Total area	120.9 sq m	1,302 sq ft

W Wardrobe, WM Washing machine, TD Tumble dryer, HIU Heat interface unit, HAS Home Automation System. Floor plans shown are for approximate measurements only. Exact layouts and sizes may vary. Please refer to the area schedule at the front of the brochure for exact area figures.

Three Bedroom

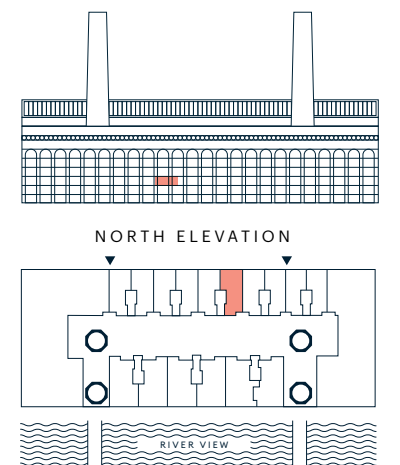
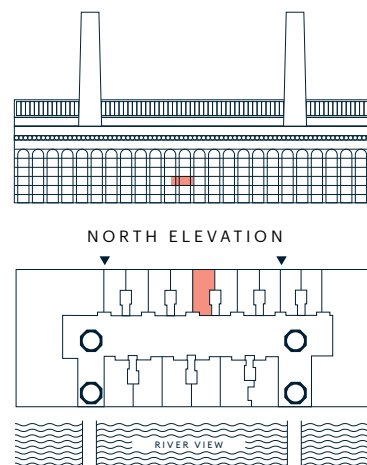


LEVEL 2 APT K2.1



Living / Dining / Kitchen	4.9m x 9.2m	16'1" x 30'2"
Principal Bedroom	3.5m x 3.8m	11'5" x 12'5"
Bedroom 2	3.4m x 3.3m	11'2" x 10'8"
Study / Bedroom	3.6m x 2.4m	11'8" x 7'9"
Total area	121.1 sq m	1,304 sq ft

W Wardrobe, WM Washing machine, TD Tumble dryer, HIU Heat interface unit, HAS Home Automation System. Floor plans shown are for approximate measurements only. Exact layouts and sizes may vary. Please refer to the area schedule at the front of the brochure for exact area figures.



Three Bedroom



LEVEL 3 APT K3.2

LEVEL 4 APT K4.2

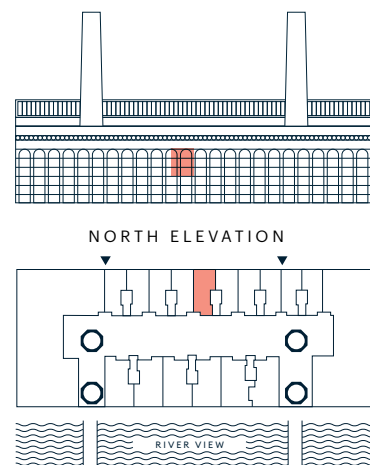
LEVEL 5 APT K5.2

* Dotted area omitted in K5.1
AW Arched windows to apartment K5.2 only

Apartment area for K5.2 is
 120.3 sq m / 1,296 sq ft



Living / Dining / Kitchen	4.9m x 9.7m	16'1" x 31'8"
Principal Bedroom	3.5m x 4.3m	11'5" x 14'1"
Bedroom 2	3.3m x 3.3m	10'8" x 10'8"
Study / Bedroom	3.6m x 2.5m	11'8" x 8'2"
*Study / Bedroom	2.9m x 2.5m	9'5" x 8'2"
Total area	120.9 sq m	1,302 sq ft



W Wardrobe, WM Washing machine, TD Tumble dryer, HIU Heat interface unit, HAS Home Automation System, AW Arched window.
 Floor plans shown are for approximate measurements only. Exact layouts and sizes may vary. Please refer to the area schedule at the front of the brochure for exact area figures.

Three Bedroom



LEVEL 3 APT K3.1

LEVEL 4 APT K4.1

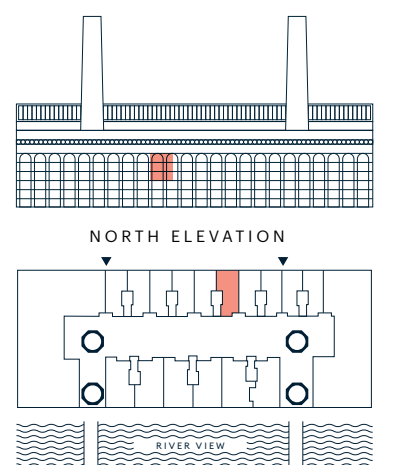
LEVEL 5 APT K5.1*

* Dotted area omitted in K5.1
AW Arched windows to apartment K5.1 only

Apartment area for K5.1 is
 120.5 sq m / 1,298 sq ft



Living / Dining / Kitchen	4.9m x 9.7m	16'1" x 31'8"
Principal Bedroom	3.5m x 4.3m	11'5" x 14'1"
Bedroom 2	3.4m x 3.3m	11'2" x 10'8"
Study / Bedroom	3.6m x 2.4m	11'8" x 7'9"
*Study / Bedroom	2.9m x 2.5m	9'5" x 8'2"
Total area	121.1 sq m	1,304 sq ft



W Wardrobe, WM Washing machine, TD Tumble dryer, HIU Heat interface unit, HAS Home Automation System, AW Arched window.
 Floor plans shown are for approximate measurements only. Exact layouts and sizes may vary. Please refer to the area schedule at the front of the brochure for exact area figures.

Three Bedroom



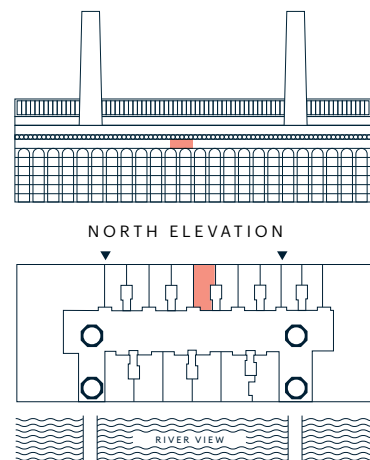
LEVEL 6 APT K6.2

Windows denoted with ** do not open in this apartment



Living / Dining / Kitchen	4.9m x 9.2m	16'1" x 30'2"
Principal Bedroom	3.5m x 3.8m	11'5" x 12'5"
Bedroom 2	3.3m x 3.3m	10'8" x 10'8"
Study / Bedroom	2.9m x 2.5m	9'5" x 8'2"
Total area	117.2 sq m	1,262 sq ft

W Wardrobe, WM Washing machine, TD Tumble dryer, HIU Heat interface unit, HAS Home Automation System. Floor plans shown are for approximate measurements only. Exact layouts and sizes may vary. Please refer to the area schedule at the front of the brochure for exact area figures.

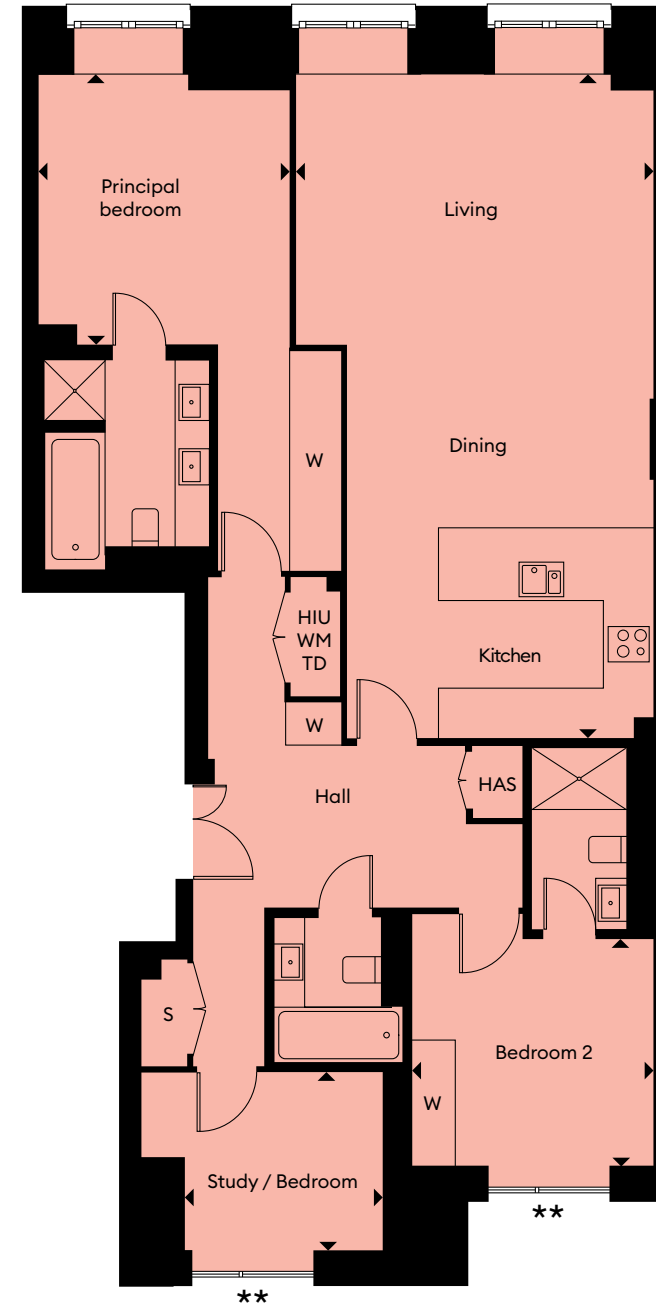


Three Bedroom



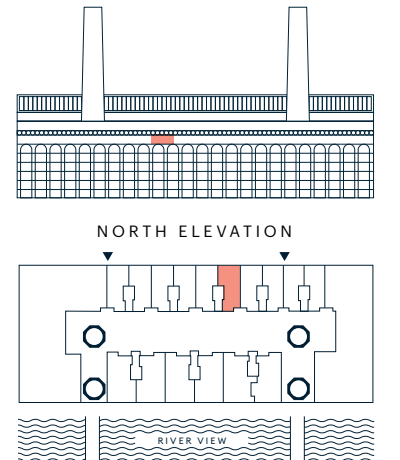
LEVEL 6 APT K6.1

Windows denoted with ** do not open in this apartment



Living / Dining / Kitchen	4.9m x 9.2m	16'1" x 30'2"
Principal Bedroom	3.5m x 3.8m	11'5" x 12'5"
Bedroom 2	3.4m x 3.3m	11'2" x 10'8"
Study / Bedroom	2.9m x 2.4m	9'5" x 7'9"
Total area	117.4 sq m	1,264 sq ft

W Wardrobe, WM Washing machine, TD Tumble dryer, HIU Heat interface unit, HAS Home Automation System. Floor plans shown are for approximate measurements only. Exact layouts and sizes may vary. Please refer to the area schedule at the front of the brochure for exact area figures.



Specification.

Inspired design

MAIN STRUCTURE

Reinforced concrete frame.

Fully restored and repaired existing brickwork façade to power station.

Aluminium double glazed powder coated window and doors to balconies and terraces.

Aluminium double glazed powder coated curtain wall system.

Spanish limestone cladding to atrium facades.

Zinc and metal roof.

WALLS

White painted skimmed plasterboard with painted MDF skirtings.

Polished stone or ceramic tiles to all bathrooms.

CEILINGS

White painted skimmed plasterboard.

FLOORING

Natural oak engineered hardwood flooring.

Carpet to bedrooms.

Bathrooms, shower rooms and WC honed stone flooring where applicable.

WARDROBES

Bespoke fitted lacquered wardrobes with contrast interior to main bedrooms.

Master bedrooms wardrobes include drawers and internal lighting.

BALCONIES

Where provided - aluminium/timber decking with glass balustrade and metal handrail.

LIFTS

The lifts serve all floors, including the two-level basement car park.

Exquisite kitchens

KITCHENS¹

Kitchens are fitted with bespoke modular cabinets with timber veneer to standard units.

Full height units are of veneer with pelmet LED lighting under cabinets.

Worktops are Silestone to most units and Stone to Penthouses only with either a matching splashback or back-painted glass splashback.

The under-mounted stainless steel sink is fitted with a deck-brushed stainless steel mixer tap.

Integrated appliances are generally by Gaggenau (or similar) unless otherwise stated and include:

- Integrated fridge/freezers
- Dishwasher
- Plate warming drawer to four and five bedroom apartments only
- Ovens
- Combined microwave and oven provided in one bedroom apartments
- Four-burner electric induction hob in one to three bedroom apartments with an electric five-burner hob in four and five bedroom apartments
- Extractor fan with integrated lighting
- Wine cooler in all apartments (by Caple or similar)
- Separate washing machine and tumble dryer by Bosch (or similar)
- Buster and Punch blackened metal handles.

Refined Bathrooms

GENERAL BATHROOMS

All walls in the bathrooms are fully tiled with ceramic tiles and feature handmade Portuguese fish scale tiles to feature walls where applicable.

Duplex units and Penthouses will have stone tiles and feature wall where applicable.

Natural honed stone tiles to the floor.

All brassware is brushed 316 stainless steel and generally by Gessi (or similar).

Underfloor heating is provided as standard.

Natural stone top vanity unit with timber veneer drawers.

Shaver sockets are fitted as standard to all bathrooms and shower rooms.

All WCs are white enamel with a dual push flush button.

Natural stone top vanity unit with timber veneer drawers.

Wall-mounted mirror or cabinet including shaver socket.

Wall-mounted mirrored and low-level veneered cabinets where applicable.

Watermark accessories.

MASTER BATHROOMS

Bathrooms are fitted with enamelled steel bathtub with integrated bath filler and brushed stainless steel hand shower attachment by Gessi (or similar).

Shower enclosure with ceiling mounted shower head, separate handheld attachment controlled, generally by Gessi (or similar).

Towel rail with a heated section of wall for towel and bathroom warming.

BATHROOMS (WITH BATH ONLY)

Bathrooms are fitted with an enamelled steel bathtub with an integrated bath filler.

Ceiling mounted and handheld showers generally by Gessi (or similar) within the bath with a glass bath screen.

Towel rail with a heated section of marble wall for towel and bathroom warming.

SHOWER ROOMS

Shower rooms are fitted with a stone shower tray, a glass shower door and thermostatically controlled shower control.

The ceiling mounted and handheld shower heads are generally by Gessi (or similar).

Superior comfort

COOLING & HEATING

The comfort cooling is provided by a mechanical fan coil unit supplying cooled air to all principal rooms.

The underfloor heating system provides heat throughout the apartment and is thermostatically controlled.²

The building is served by a development wide Combined Heat and Power Plant which provides metered hot water within the apartments.

LIGHTING

Energy efficient LED downlights are fitted in the living areas, hallways, kitchens and bedrooms.

5 amp sockets are fitted to living areas and all bedrooms.

Integrated LED lighting is provided in the master bedroom wardrobes.

A fully automated and addressable lighting control system is provided for each room.

ELECTRICS

Living areas and bedrooms are fitted with a telephone point together with a TV outlet and are wired for satellite television and FM/DAB radio.

Smoke detectors are fitted as standard.

HOME AUTOMATION SYSTEM

Apartments are fitted with a Home Automation System incorporating a central touch screen with separate local scene setting controls to principle rooms. The system is designed to control lighting, heating and cooling and interfaces with the door entry intercom, security access and panic alarm systems.

Tranquil gardens

EXTERNAL

The ground level hard and soft landscaping has integrated planting and feature lighting which is designed by a specialist landscape architect.

MANAGEMENT & SECURITY

Estate Managers are employed to provide a 24 hour concierge service as well as security patrols. A CCTV system with a centralised security monitoring facility provides cover for the whole development.

Superior facilities

LEISURE & SPA FACILITIES

A fully equipped gymnasium and exercise areas with indoor swimming pool, hydrotherapy spa pool, sauna and steam are provided for residents' private use.

RESTAURANTS & RETAIL

Public accessed, commercially operated waterside restaurant and coffee bar with ancillary shops are located within the Powerhouse, subject to lease.

PARKING

Secure two-level underground parking is located underneath the development and is available at an additional cost (subject to availability).

Notes

¹ Variances occur between apartment types. Please refer to the sales team for individual apartment schedules. CK Asset Holdings reserves the right to alter the design and substitute any item within the specification for a similar or improved product.

² The comfort cooling system is designed to provide an ambient temperature within the apartment for the majority of normal external temperatures. This may not be achieved in extreme temperature conditions.

³ The apartment specification is subject to change.

WORLD CLASS WATERFRONTS



Albion Riverside SW11



Convoys Wharf SE8



Chelsea Waterfront SW10



Powerhouse is being brought to life by CK Asset Holdings, world leading experts in creating waterfront places to live. One of the largest developers in Hong Kong, it is responsible for many waterfront buildings not just in Hong Kong, but mainland China, Canada and the Bahamas. In London, the company has created a series of inspiring and imaginative buildings to grace the riverfront of this capital city - from Albion Riverside to Montevetro.

POWERHOUSE

A T C H E L S E A W A T E R F R O N T

Chelsea Waterfront Marketing Suite
90 Lots Road, London SW10 0QD

powerhousechelsea.com



SALES AGENTS



+44 (0)20 7352 8852



Member of CK Asset Group 長江實業集團成員

+852 2128 7128

This brochure and the information contained in it does not form part of any offer and/or contract, and while reasonable effort has been made to ensure accuracy, this cannot be guaranteed and no representation or warranty is made in that regard. Development and apartment designs and layouts are indicative only and may change without notice. The specification of the apartments is the anticipated specification at the date this brochure was prepared, but may be subject to change without notice. Dimensions shown in any text or plan are approximate sizes only and actual sizes may be different once constructed. Computer Generated Images and photos are indicative only and may have been enhanced. Photos, images, drawings and perspectives contained in this brochure may not relate to the development and may not accurately reflect the completed development. All development images and artwork in this brochure are subject to copyright and cannot be reproduced, copied, redistributed, or otherwise made available in whole or part in any way without prior written consent of the relevant copyright holder. All sales remain subject to contract. All information regarding prospective commercial or retail tenants represents current intention only and the final identity and/or nature of the tenants may change without notice. The facilities and services (including, but not exclusively the health club, restaurants, shops etc.) may not be available at the date of completion. Wall, ceiling and floor finishes, furniture and lighting shown in Computer Generated Images and photos are not included in sales and layouts may differ. Chelsea Waterfront and the building names are marketing names only and will not necessarily form part of the approved postal addresses. Neither the agents nor any person in their employ has any authority to make or give any representation, warranty and guarantee (whether written or oral) in respect of or in relation to the development (or any parts thereof) and, save for this disclaimer, no information in this brochure is to be treated as or deemed to be a warranty, guarantee, undertaking, obligation and/or representation. Opinions expressed in this brochure are not statements of fact and nothing in this brochure shall be treated or regarded as legal, tax, financial or any other type of advice. We strongly recommend all parties visit and inspect the development site to understand its surrounding areas and environment and that all specific details relating to your chosen property and the development should be checked with your legal advisor prior to purchase. We disclaim to the fullest extent permitted by law all liability for loss or damage whether arising in tort, contract or otherwise, arising out of or in relation to or connection with the information contained in this brochure.



CHELSEA
WATERFRONT
